

Mark Time

Bb

Kenny Wheeler

A^bMaj7(#11)

Measures 1-4 of the first system. The music is in B-flat major, 4/4 time. The first staff (treble clef) contains a half note A-flat, a half note B-flat, a quarter note C, a quarter note D, a half note E-flat, and a half note F. The second staff (bass clef) contains a whole note A-flat, a half note B-flat, a quarter note C, a quarter note D, a half note E-flat, and a half note F. The key signature has two flats (B-flat and E-flat).

5 Gmin11

Measures 5-8 of the second system. The music continues in B-flat major, 4/4 time. The first staff (treble clef) contains a half note G, a half note A, a quarter note B-flat, a quarter note C, a half note D, and a half note E. The second staff (bass clef) contains a whole note G, a half note A, a quarter note B-flat, a quarter note C, a half note D, and a half note E. The key signature has two flats (B-flat and E-flat).

9 B^bMaj7(#11)

Measures 9-12 of the third system. The music continues in B-flat major, 4/4 time. The first staff (treble clef) contains a half note B-flat, a half note C, a quarter note D, a quarter note E, a half note F, and a half note G. The second staff (bass clef) contains a whole note B-flat, a half note C, a quarter note D, a quarter note E, a half note F, and a half note G. The key signature has two flats (B-flat and E-flat).

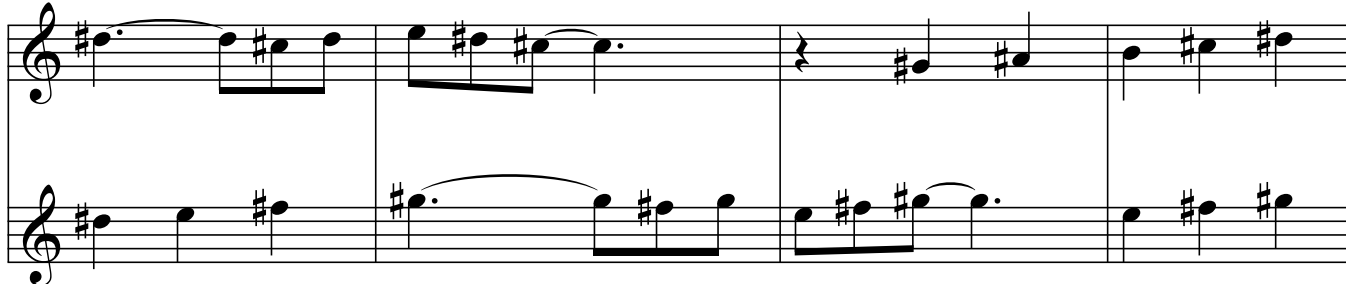
13 B^bmin11

Measures 13-16 of the fourth system. The music continues in B-flat major, 4/4 time. The first staff (treble clef) contains a half note B-flat, a half note C, a quarter note D, a quarter note E, a half note F, and a half note G. The second staff (bass clef) contains a whole note B-flat, a half note C, a quarter note D, a quarter note E, a half note F, and a half note G. The key signature has two flats (B-flat and E-flat).

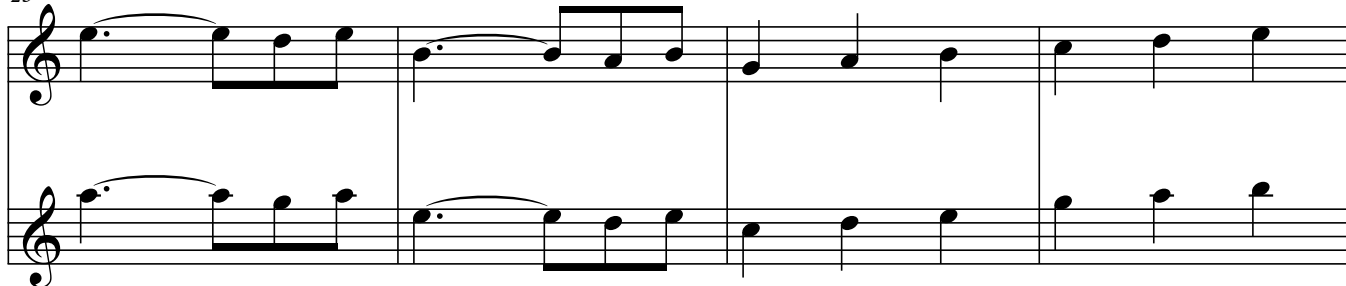
17 D^bMaj7(#11)

Measures 17-20 of the fifth system. The music continues in B-flat major, 4/4 time. The first staff (treble clef) contains a half note D-flat, a half note E, a quarter note F, a quarter note G, a half note A, and a half note B. The second staff (bass clef) contains a whole note D-flat, a half note E, a quarter note F, a quarter note G, a half note A, and a half note B. The key signature has two flats (B-flat and E-flat).

21 C#min11



25 FMaj7(#11)



29 Emin11

