

Bb

# Blues in Six

♩ = 130 Swing

Tom Harrell

## Intro



## Melody Part

5 Gsus4

9 Fsus4 Gsus4

13 Bbm9 Cm9 Dbmaj7 Bbm9 Cm9 Dbmaj7 Gbmaj7 Gsus4

16

A series of four musical staves in 6/4 time with a treble clef. The first staff starts at measure 5 and ends at measure 8, featuring a Gsus4 chord and triplet eighth notes. The second staff starts at measure 9 and ends at measure 12, featuring Fsus4 and Gsus4 chords. The third staff starts at measure 13 and ends at measure 15, featuring Bbm9, Cm9, Dbmaj7, Gbmaj7, and Gsus4 chords. The fourth staff starts at measure 16 and ends at measure 16, concluding the melody with a double bar line.

## Harmony Part Tenor Sax (on repeat)

17

21

25

A series of three musical staves in 6/4 time with a treble clef. The first staff starts at measure 17 and ends at measure 20, featuring triplet eighth notes. The second staff starts at measure 21 and ends at measure 24, also featuring triplet eighth notes. The third staff starts at measure 25 and ends at measure 28, concluding the harmony part with a double bar line.

as played on Tom Harrell - Moon Alley

Piano / Bass

# Blues in Six

Swing ♩ = 130

Tom Harrell

**Intro** F sus4

Piano

Bass

**A** F sus4

Piano

Bass

8 E♭sus4

Piano

Bass

11 F sus4 A♭m9 B♭m9 B Maj7

Piano

Bass

14 A♭m9 B♭m9 B Maj7 E Maj7 F sus4

Piano

Bass

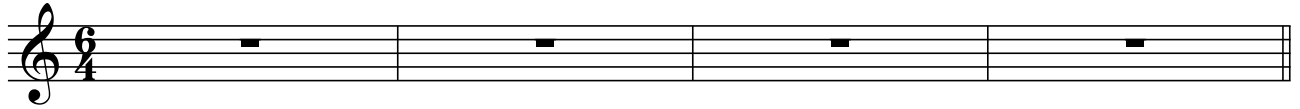
E♭

# Blues in Six

♩ = 130 Swing

Tom Harrell

## Intro



## Melody Part

5 Dsus4

9 Csus4 Dsus4

13 Fm9 Gm9 A♭Maj7 Fm9 Gm9 A♭Maj7 D♭Maj7 Dsus4

16

The Melody Part consists of four staves of music. The first staff (measures 5-8) is in Dsus4. The second staff (measures 9-12) is in Csus4 and Dsus4. The third staff (measures 13-15) contains chords: Fm9, Gm9, A♭Maj7, Fm9, Gm9, A♭Maj7, D♭Maj7, and Dsus4. The fourth staff (measure 16) is a single measure. The melody features many triplet patterns.

## Harmony Part (on repeat)

17

21

25

The Harmony Part consists of three staves of music. The first staff (measures 17-20) is in Dsus4. The second staff (measures 21-24) is in Csus4 and Dsus4. The third staff (measures 25-28) contains chords: Fm9, Gm9, A♭Maj7, Fm9, Gm9, A♭Maj7, D♭Maj7, and Dsus4. The harmony part features many triplet patterns.

as played on Tom Harrell - Moon Alley

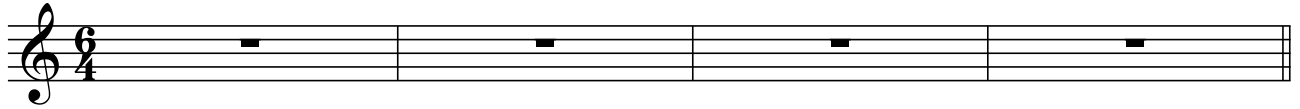
C

# Blues in Six

♩ = 130 Swing

Tom Harrell

## Intro



## Melody Part

5 Fsus4

9 Ebsus4 Fsus4

13 Abm9 Bbm9 BMaj7 Abm9 Bbm9 BMaj7 EMaj7 Fsus4

16

## Harmony Part (on repeat)

17

21

25

as played on Tom Harrell - Moon Alley