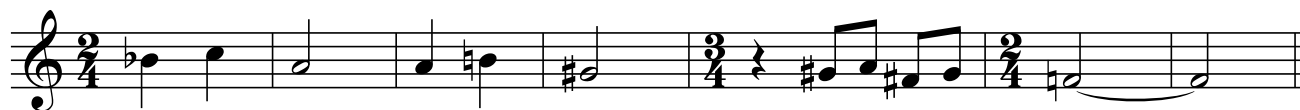


5 For Six

Kenny Wheeler

Flowing ♩ = 100

A



B



15



C



D

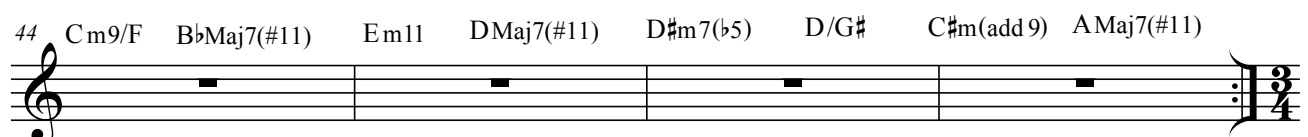
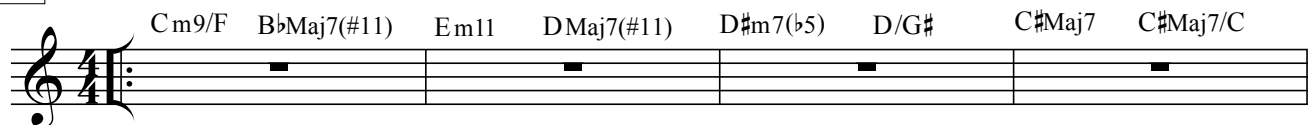


34



E

Slow Jazz March ♩ = 60 OPEN SOLOS



F Med.Up Jazz Waltz (♩=♩.)

G

54

60

66

H

I

78

84

90

Slower

96

5 For Six

Kenny Wheeler

Flowing ♩ = 100

A



B



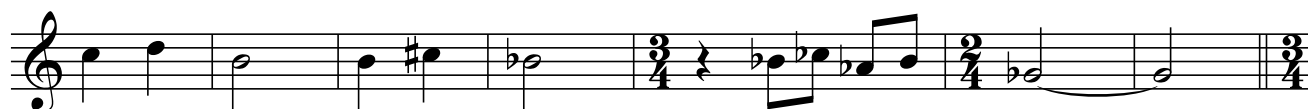
15



C



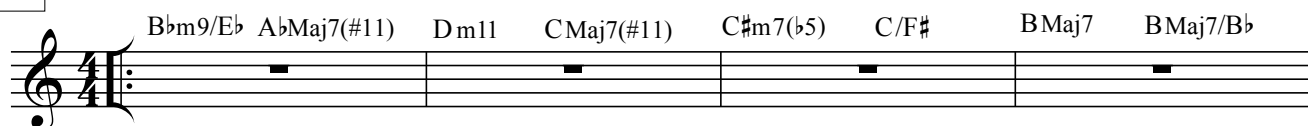
D



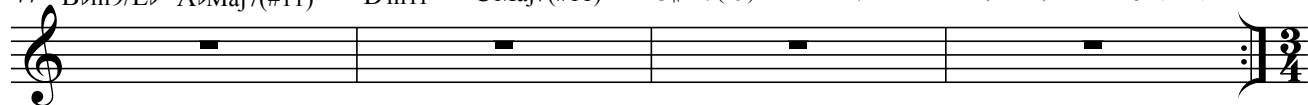
34



E Slow Jazz March ♩ = 60 OPEN SOLOS



44 Bbm9/Eb AbMaj7(#11) Dm11 CMaj7(#11) C#m7(b5) C/F# Bm(add9) GMaj7(#11)



Med.Up Jazz Waltz (♩=♩.)

F

Bbm9/Eb AbMaj7(#11) Dm11 CMaj7(#11) C#m7(b5) C/F#



B Maj9 B Maj7/Bb G Bbm7/Eb AbMaj7(#11) Dm11 CMaj7(#11)



C#m7(b5) C/F# Bm(add9) GMaj7(#11) F#7#5(#9) F7#5(#9)



Bbm(Maj7) A7#5(#9) D7#5(b9) D13(#9) G13(b9) G7#5(#9) Cm9 AbMaj7(#11)



H

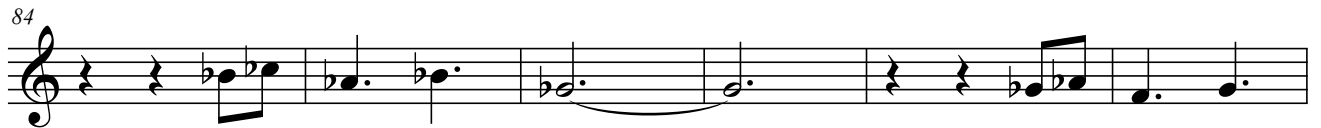
Dm11/G CMaj7(#11) F#m11 EMaj7(#11) Fm7(b5) E/Bb



EbMaj7 EbMaj7/D I Dm11/G CMaj7(#11) F#m11 EMaj7(#11)



Fm7(b5) E/Bb Ebm11 BMaj7(#11) Bb7#5(#9) A7#5(#9)



Dm9 Db7#5(#9) F#7#5(#9) C7(#9) B7(b9) Ebm(Maj7) Em(add9) Eb7(13)



Slower

Ab7#5(#9) Ab13(#9) Db13(b9) Db13(#9) Gbm(Maj7)



5 For Six

Kenny Wheeler

Flowing ♩ = 100

A



B



15



C



D

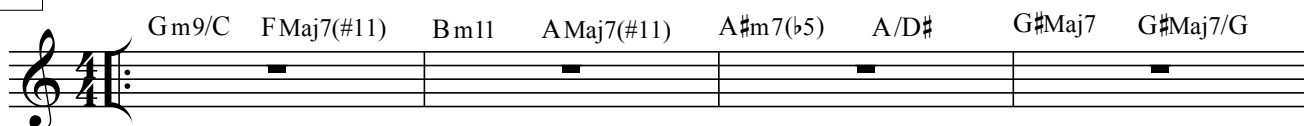


34

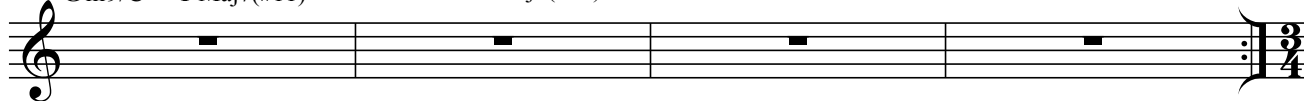


E

Slow Jazz March ♩ = 60 OPEN SOLOS



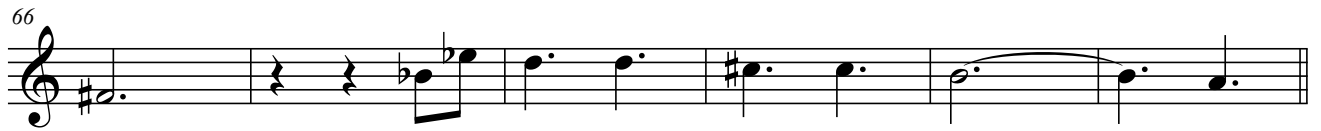
44 Gm9/C FMaj7(#11) Bm11 AMaj7(#11) A#m7(b5) A/D# G#Maj7 G#Maj7/G



F Med.Up Jazz Waltz (♩=♩.)



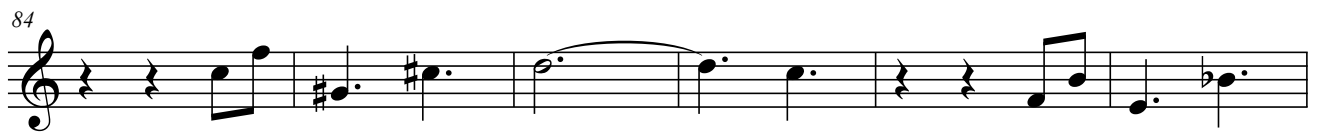
G



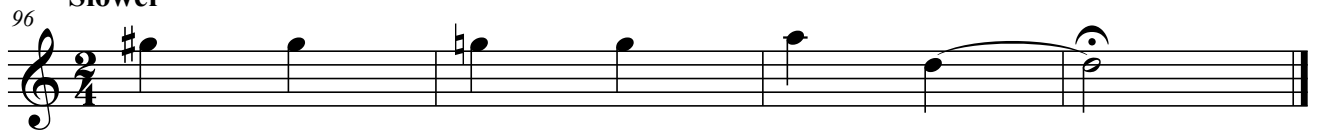
H



I



Slower

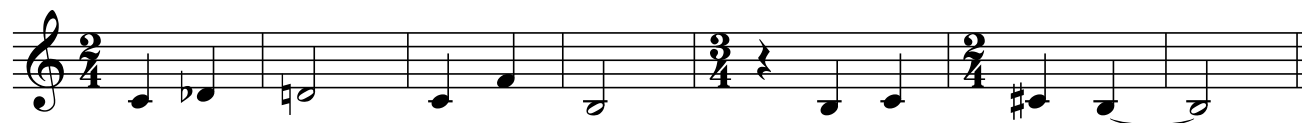


5 For Six

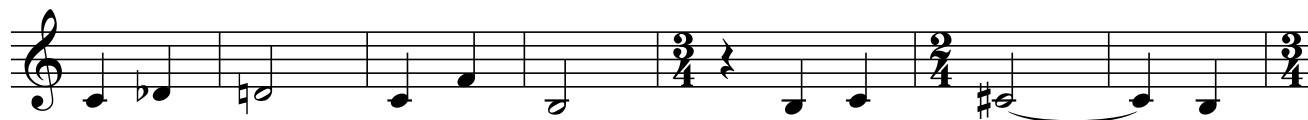
Kenny Wheeler

Flowing ♩ = 100

A



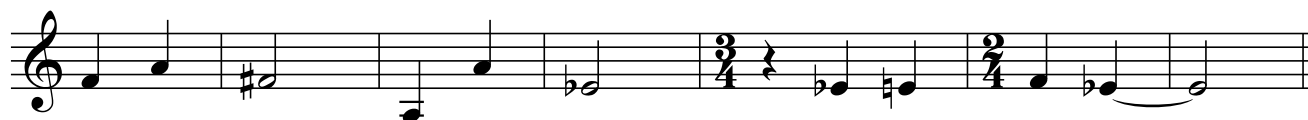
B



15



C



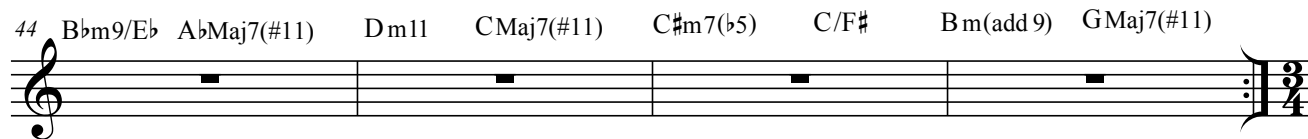
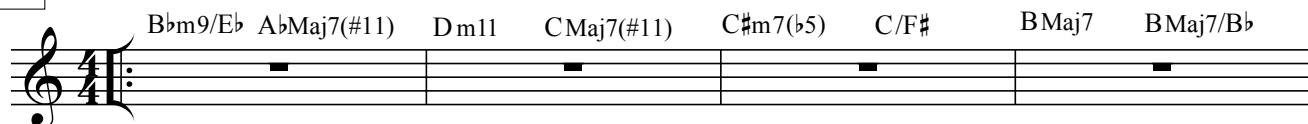
D



34



E **Slow Jazz March** ♩ = 60 **OPEN SOLOS**



F Med.Up Jazz Waltz (♩=♩)

G

54

60

66

H

I

78

84

90

Slower

96

5 For Six

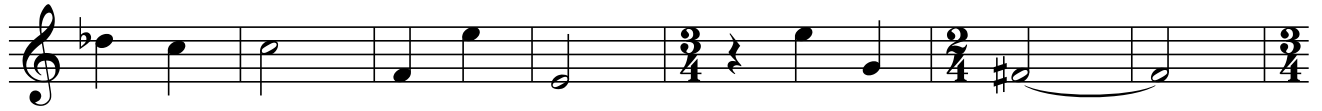
Kenny Wheeler

Flowing ♩ = 100

A



B



15



C



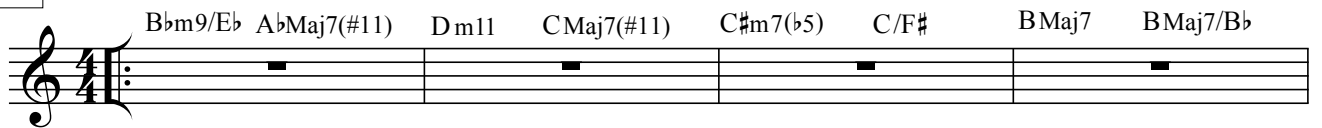
D



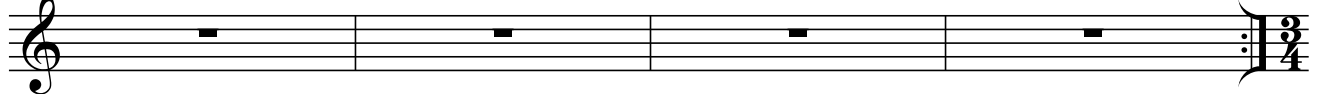
34



E Slow Jazz March ♩ = 60 OPEN SOLOS



44 Bbm9/Eb AbMaj7(#11) Dm11 CMaj7(#11) C#m7(b5) C/F# Bm(add 9) GMaj7(#11)

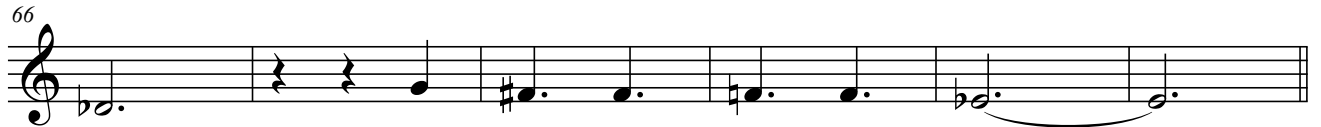


F

Med.Up Jazz Waltz (♩=♩.)



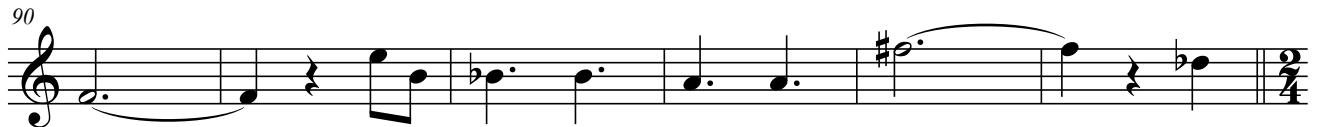
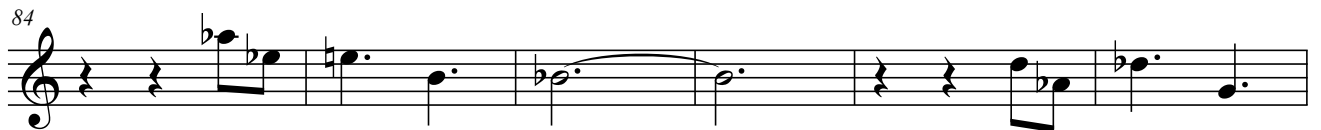
G



H



I



Slower



Bass

5 For Six

Kenny Wheeler

Flowing ♩ = 100

A

Musical notation for section A, bass clef, 2/4 time signature. The first measure has a flat key signature. The notation includes eighth and quarter notes.

B

Musical notation for section B, bass clef, 2/4 time signature. The notation includes quarter and eighth notes.

15

Musical notation for section B continuation, bass clef, 3/4 time signature. The notation includes quarter and eighth notes.

C

Musical notation for section C, bass clef, 2/4 time signature. The notation includes quarter and eighth notes.

D

Musical notation for section D, bass clef, 2/4 time signature. The notation includes quarter and eighth notes.

34

Musical notation for section D continuation, bass clef, 2/4 time signature. The notation includes quarter and eighth notes, ending with a double bar line. A *rit.* marking is present below the staff.

E Slow Jazz March ♩ = 60 OPEN SOLOS

Musical notation for section E, treble clef, 4/4 time signature. Chord symbols are written above the staff: Bbm9/Eb, AbMaj7(#11), Dm11, CMaj7(#11), C#m7(b5), C/F#, BMaj7, BMaj7/Bb.

Musical notation for section E continuation, treble clef, 4/4 time signature. Chord symbols are written above the staff: 44 Bbm9/Eb, AbMaj7(#11), Dm11, CMaj7(#11), C#m7(b5), C/F#, Bm(add 9), GMaj7(#11).

Med. Up Jazz Waltz (♩=♩.)

F

Bbm9/Eb

AbMaj7(#11)

Dm11

CMaj7(#11)

C#m7(b5)

C/F#



BMaj9

BMaj7/Bb

G

Bbm7/Eb

AbMaj7(#11)

Dm11

CMaj7(#11)

54



C#m7(b5)

C/F#

Bm(add9)

GMaj7(#11)

F#7#5(#9)

F7#5(#9)

60



Bbm(Maj7)

A7#5(#9)

D7#5(b9)

D13(#9)

G13(b9)

G7#5(#9)

Cm9

AbMaj7(#11)

66



H

Dm11/G

CMaj7(#11)

F#m11

EMaj7(#11)

Fm7(b5)

E/Bb



EbMaj7

EbMaj7/D

I

Dm11/G

CMaj7(#11)

F#m11

EMaj7(#11)

78



Fm7(b5)

E/Bb

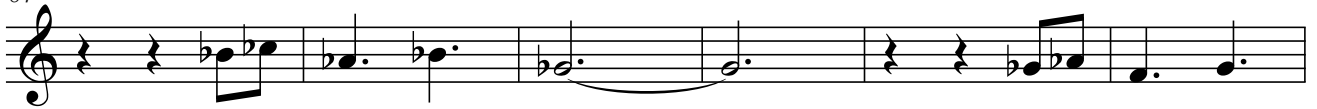
Eb11

BMaj7(#11)

Bb7#5(#9)

A7#5(#9)

84



Dm9

Db7#5(#9)

F#7#5(#9)

C7(#9)

B7(b9)

EbMaj7

Em(add9)

Eb7(13)

90



Slower

Ab7#5(#9)

Ab13(#9)

Db13(b9)

Db13(#9)

GbMaj7

96

