

Bb

Can't Dance

Joshua Redman

straight 8ths Groove ♩ = 104

A Em7

A7 Ab7 G7 Em7

Em7

A7 Ab7 G7 Em7

B A7

A7 Bb7 B7#9 Em7

C Em7

A7 Ab7 G7 Em7

Can't Dance

D A7

37 A7 Bb7 B7#9 Em7 Solo Break

Solo on Form AABCD

C Git

Can't Dance

Joshua Redman

straight 8ths Groove ♩ = 104

A Dm7

5 G7 Gb7 F7 Dm7

9 Dm7

13 G7 Gb7 F7 Dm7

B G7

21 G7 Ab7 A7#9 Dm7

C Dm7

29 G7 Gb7 F7 Dm7

Can't Dance

D G7

37 G7 Ab7 A7#9 Dm7 Solo Break

Solo on Form AABCD

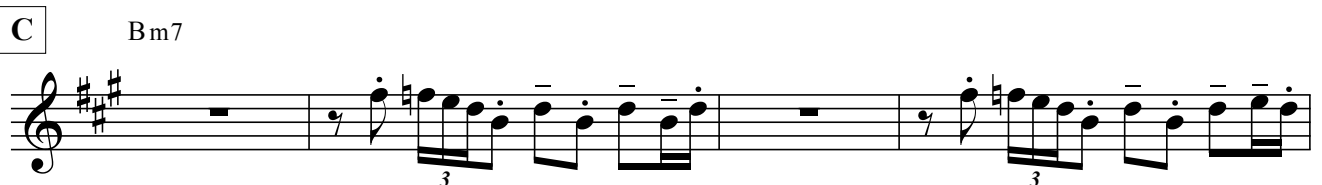
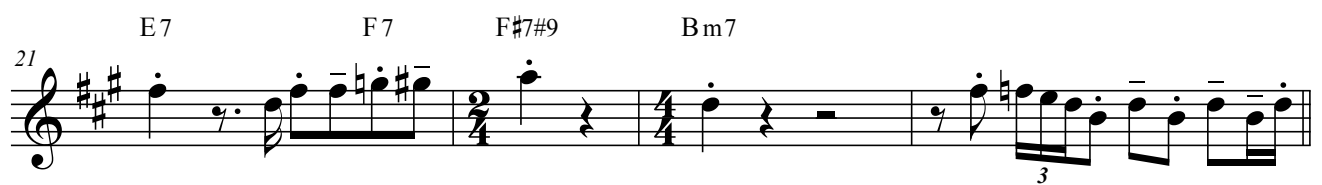
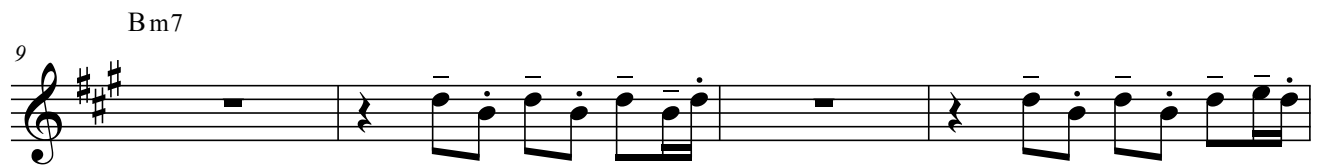
Eb

Can't Dance

Joshua Redman

straight 8ths Groove ♩ = 104

A Bm7



Can't Dance

D E7

37 E7 F7 F#7#9 Bm7 Solo Break

Solo on Form AABCD

Piano / Bass

Can't Dance

straight 8ths Groove ♩ = 104

Joshua Redman

A Dm7

Musical notation for section A, measures 1-4. Treble clef has chords, bass clef has a groove. 'sim.' marking above measure 3.

5

G7 Gb7 F7 Dm7

Musical notation for section A, measures 5-8. Treble clef has chords, bass clef has a groove. Measure 5 starts with a 5-measure rest.

B G7 G7

Musical notation for section B, measures 9-12. Treble clef has chords, bass clef has a groove.

13

G7 Ab7 A7#9 Dm7

Musical notation for section B, measures 13-16. Treble clef has chords, bass clef has a groove. Measure 13 starts with a 13-measure rest.

C Dm7

Musical notation for section C, measures 17-20. Treble clef has chords, bass clef has a groove.

21 G7 Gb7 F7 Dm7

D G7 G7

29 G7 Ab7 A7#9 Dm7

Solo on Form AABCD