

Bb

# Mare Nostrum

Jan Lundgren

accordion:

Intro

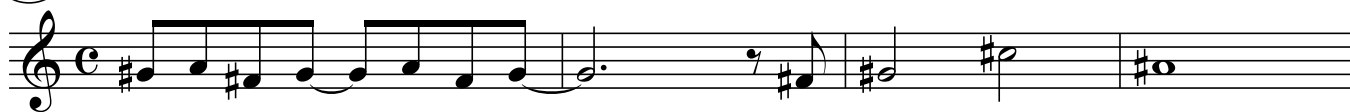
A Maj7

D#m11

G#7/D#

C#m7

B Maj7



B m7

B m/A

F#Maj7

Esus

E7b9

flgh:



A

A m9

G#dim/A



A m9

A7(b9)



D m9

G7

C m9

F7



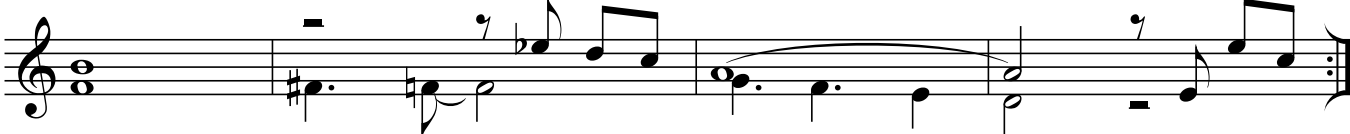
B m7(b5)

Esus

E7(b9)

F Maj7

E7(b9)



As played on Fresu/Galliano/Lundgren - Mare Nostrum



Eb

# Mare Nostrum

Jan Lundgren

accordion:

Intro

E Maj7

A#m11

D#7/A#

G#m7

F#Maj7

Musical staff for the first line of the Intro section, featuring a treble clef and a key signature of one sharp (F#). The melody consists of eighth and quarter notes.

F#m7

F#m/E

C#Maj7

Bsus

B7b9

flgh:

Musical staff for the second line of the Intro section, continuing the melody with various chord changes and a fermata.

A

Em9

D#dim/E

Musical staff for the first line of section A, starting with a repeat sign and a treble clef. The melody features a long note with a fermata.

Em9

E7(b9)

Musical staff for the second line of section A, continuing the melody with a long note and a fermata.

A m9

D7

G m9

C7

Musical staff for the third line of section A, featuring a treble clef and a key signature of one sharp. The melody includes eighth and quarter notes.

F#m7(b5)

Bsus

B7(b9)

C Maj7

B7(b9)

Musical staff for the fourth line of section A, concluding the section with a double bar line and repeat dots. The melody features a long note with a fermata.

As played on Fresu/Galliano/Lundgren - Mare Nostrum