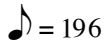


Bb

# Ida's Daydream

Rolf Zielke

2+2+2+3  = 196

**Intro**

piano/bass 8vb



**A**

Dm7



Dm7



**B**

D#m7

B Maj7

G7alt.



Ab Maj7

Gm7



Ab Maj7

Em7(b5)

A7alt.



C

# Ida's Daydream

Rolf Zielke

2+2+2+3 ♪ = 196

**Intro**

piano/bass 8vb

Musical notation for the Intro section, featuring a 9/8 time signature and a piano/bass 8vb instruction. The melody consists of eighth and quarter notes.

**A**

Cm7

Musical notation for the first measure of section A, marked Cm7. The melody starts with a quarter rest followed by eighth and quarter notes.

Cm7

Musical notation for the second measure of section A, marked Cm7. The melody continues with eighth and quarter notes.

**B**

C#m7

AMaj7

F7alt.

Musical notation for the first measure of section B, marked C#m7, AMaj7, and F7alt. The melody features a quarter rest followed by eighth and quarter notes.

GbMaj7

Fm7

Musical notation for the second measure of section B, marked GbMaj7 and Fm7. The melody continues with eighth and quarter notes.

GbMaj7

Dm7(b5)


G7alt.

Musical notation for the third measure of section B, marked GbMaj7, Dm7(b5), and G7alt. The melody concludes with a quarter rest and a double bar line.

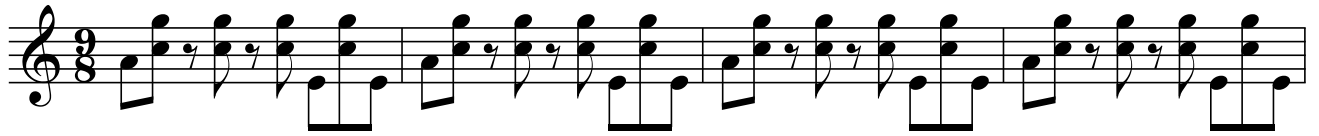
Eb

# Ida's Daydream

Rolf Zielke

2+2+2+3  = 196

**Intro** piano/bass 8vb



**A** Am7



Am7  
9



**B** A#m7

F#Maj7

D7alt.



EbMaj7

Dm7



EbMaj7

Bm7(b5)

E7alt.

