

Bb

# Charms of The Night Sky

Dave Douglas

♩ = 114

Acc.: EbMaj7(#11)/G

G sus

Gm9

**A**

Ab/G

D+/G

Bb+/G

A+/G

F+/G

Ab+/G

1. C/G

G

2. C/G

G

EbMaj7(#11)/G

Acc.:

G sus

1.

2.

Tp + Viol:

**B**

EbMaj7(#11)

GbMaj7(#11)

EbMaj7(#11)/G

EMaj7(#11)

AbMaj7(#11)/G

EMaj7(#11)

D7(#9)

BMaj7(#11)

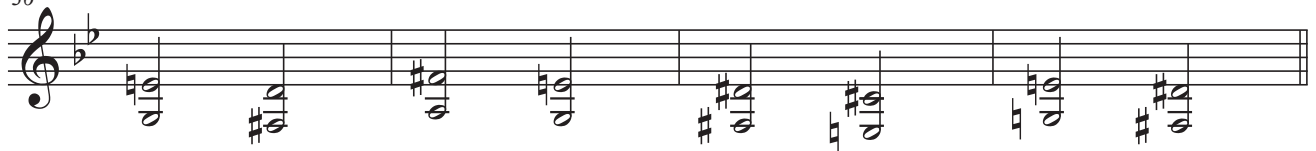
G#sus

EMaj7(#11)

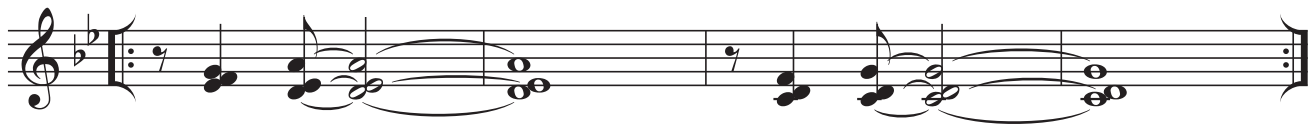
**C** Acc.: E/E $\flat$ E $\flat$ /BD/B $\flat$ 

B/A

36

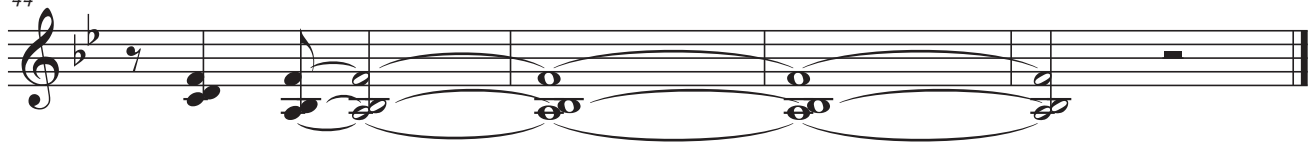
**D** E $\flat$ Maj7(#11)/G

G sus



Gm9

44



Solos on Form ABC

as played on Dave Douglas - Charms of The Night Sky

C

# Charms of The Night Sky

Dave Douglas

♩ = 114

Acc.: D $\flat$ Maj7(#11)/F

F sus

Fm9

Tp:

**A**

G $\flat$ /F

C+/F

A $\flat$ /F

G+/F

E $\flat$ /F

G $\flat$ /F

1. B $\flat$ /F

F

Acc.:

F sus

1.

2.

Tp + Viol:

**B**

D $\flat$ Maj7(#11)

E $\sharp$ Maj7(#11)

D $\flat$ Maj7(#11)/F

D $\sharp$ Maj7(#11)

G $\flat$ Maj7(#11)/F

D $\sharp$ Maj7(#11)

C7(#9) A $\sharp$ Maj7(#11)

F $\sharp$ sus

D $\sharp$ Maj7(#11)

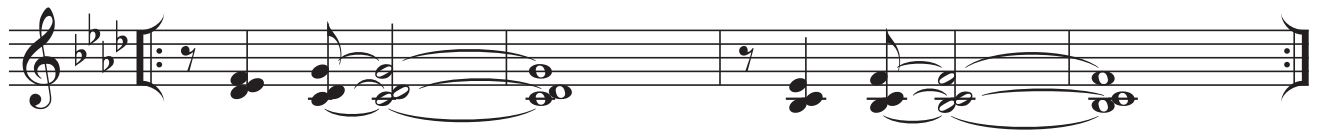
**C** Acc.: D/D $\flat$  (Bass on 2+4)

D $\flat$ /A

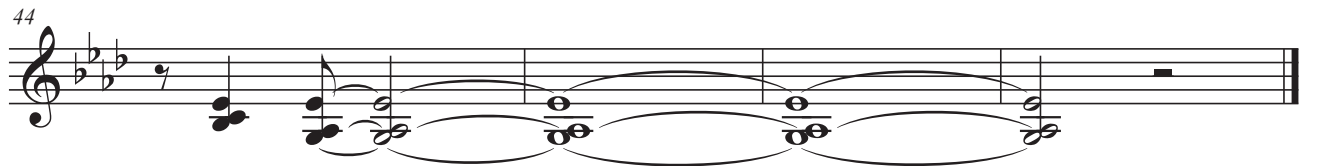


**D** D $\flat$ Maj7(#11)/F

F sus



F m9



Solos on Form ABC

Ostinato Bass Line in Pedal Parts (Intro / A / D):



as played on Dave Douglas - Charms of The Night Sky