


# Jazz Vocabulary No 11

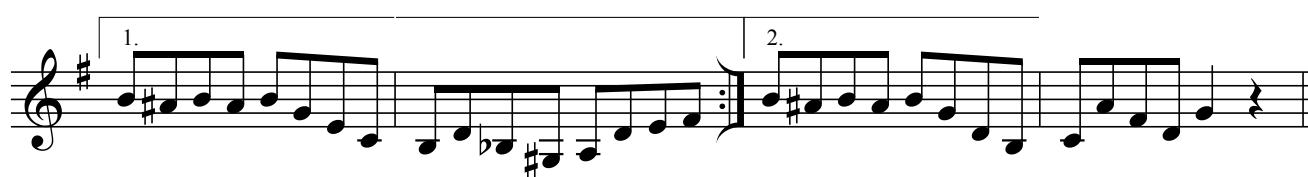
## ala Butch & Butch (Oliver Nelson)

Matthias Bergmann

1




Musical notation for exercise 1, first system. Treble clef, key signature of one sharp (F#), 4/4 time signature. The notation consists of a single staff with a repeat sign at the beginning, followed by a sequence of eighth and quarter notes.




Musical notation for exercise 1, second system. Treble clef, key signature of one sharp (F#), 4/4 time signature. The notation consists of two staves. The first staff has a first ending bracket labeled '1.' and a second ending bracket labeled '2.'. The second staff continues the melody.

2




Musical notation for exercise 2, first system. Treble clef, key signature of three flats (Bb, Eb, Ab), 4/4 time signature. The notation consists of a single staff with a repeat sign at the beginning, followed by a sequence of eighth and quarter notes.




Musical notation for exercise 2, second system. Treble clef, key signature of three flats (Bb, Eb, Ab), 4/4 time signature. The notation consists of two staves. The first staff has a first ending bracket labeled '1.' and a second ending bracket labeled '2.'. The second staff continues the melody.

3




Musical notation for exercise 3, first system. Treble clef, key signature of two sharps (F#, C#), 4/4 time signature. The notation consists of a single staff with a repeat sign at the beginning, followed by a sequence of eighth and quarter notes.

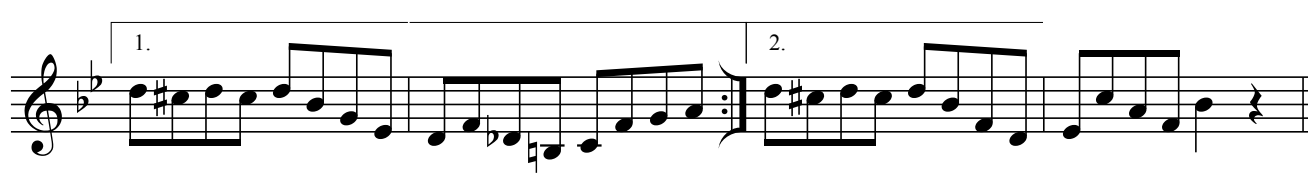


Musical notation for exercise 3, second system. Treble clef, key signature of two sharps (F#, C#), 4/4 time signature. The notation consists of two staves. The first staff has a first ending bracket labeled '1.' and a second ending bracket labeled '2.'. The second staff continues the melody.

4

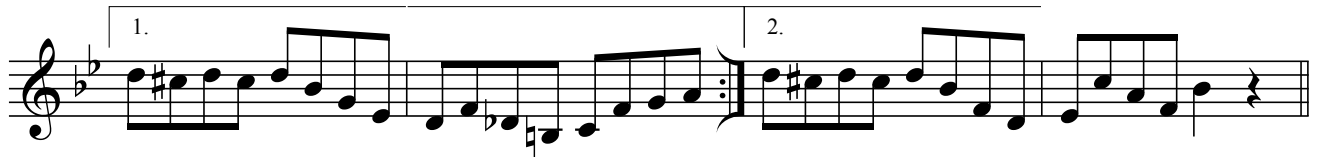


Musical notation for exercise 4, first system. Treble clef, key signature of two flats (Bb, Eb), 4/4 time signature. The notation consists of a single staff with a repeat sign at the beginning, followed by a sequence of eighth and quarter notes.

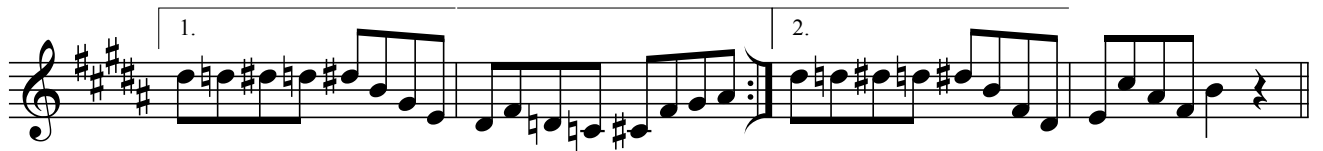


Musical notation for exercise 4, second system. Treble clef, key signature of two flats (Bb, Eb), 4/4 time signature. The notation consists of two staves. The first staff has a first ending bracket labeled '1.' and a second ending bracket labeled '2.'. The second staff continues the melody.

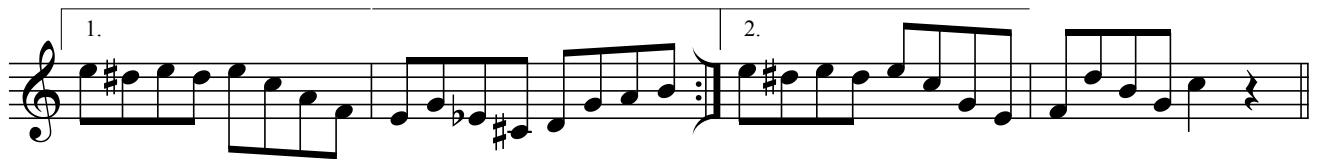
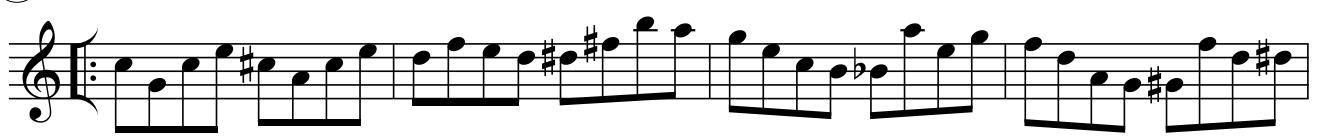
5



6



7



8

