

# Jazz Vocabulary No 8

Matthias Bergmann

1

First system of exercise 1: Treble clef, 4/4 time signature. The melody consists of eighth notes with various accidentals (flats and naturals) across four measures.

2

First system of exercise 2: Treble clef, 4/4 time signature. The key signature has three sharps (F#, C#, G#). The melody consists of eighth notes with various accidentals across four measures.

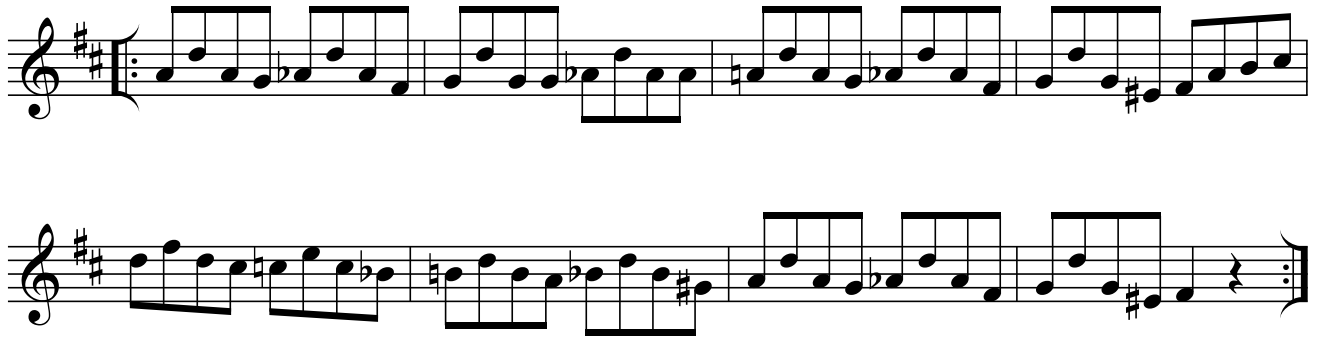
3

First system of exercise 3: Treble clef, 4/4 time signature. The key signature has four flats (Bb, Eb, Ab, Db). The melody consists of eighth notes with various accidentals across four measures.

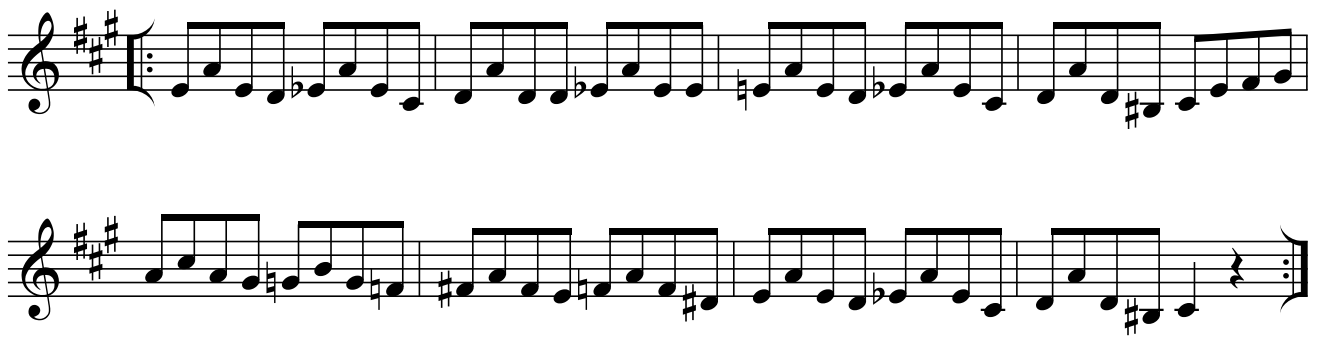
4

First system of exercise 4: Treble clef, 4/4 time signature. The key signature has three flats (Bb, Eb, Ab). The melody consists of eighth notes with various accidentals across four measures.

5



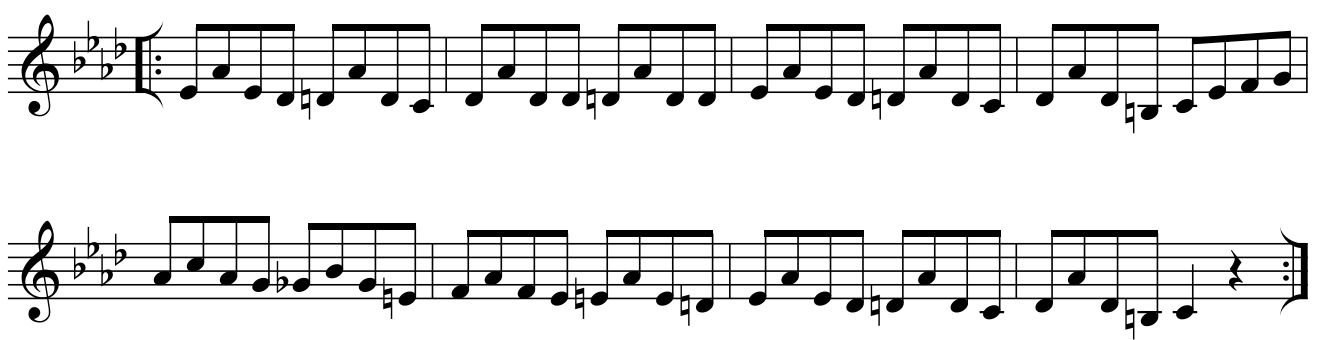
6



7



8



9



10

Exercise 10: Two staves of music in G major. The first staff starts with a repeat sign and contains a melodic line with various intervals and accidentals. The second staff continues the melody and ends with a double bar line and repeat dots.

11

Exercise 11: Two staves of music in B-flat major. The first staff starts with a repeat sign and contains a melodic line with various intervals and accidentals. The second staff continues the melody and ends with a double bar line and repeat dots.

12

Exercise 12: Two staves of music in D major. The first staff starts with a repeat sign and contains a melodic line with various intervals and accidentals. The second staff continues the melody and ends with a double bar line and repeat dots.

13

Exercise 13: Two staves of music in B-flat major. The first staff starts with a repeat sign and contains a melodic line with various intervals and accidentals. The second staff continues the melody and ends with a double bar line and repeat dots.

14

Exercise 14: Two staves of music in D major. The first staff starts with a repeat sign and contains a melodic line with various intervals and accidentals. The second staff continues the melody and ends with a double bar line and repeat dots.