

Bb

Gustavo's Bolero

Matthias Bergmann

♩ = 90

A

E(addA#)/G#

D#add9/G

F#sus(addA#)

D#/E



C#min

G#min/B

A7(b9)

D#7

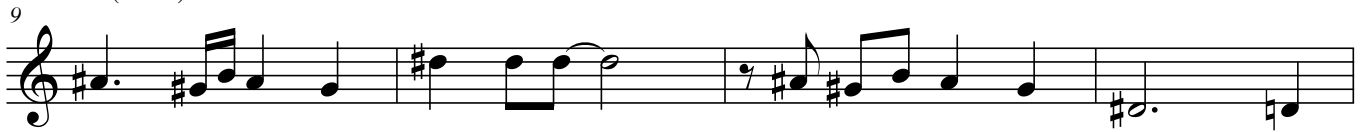


E(addA#)/G#

D#add9/G

F#sus(addA#)

D#/E



C#min

G#min

E7

D#7

G#min



B

G#min

G#7

C#min

D#7



G#min

E7

D#7



G#min

G#7

C#min

D#7



G#min

F#add9

EMaj7#11

D#7



Gustavo's Bolero

♩ = 90

Matthias Bergmann

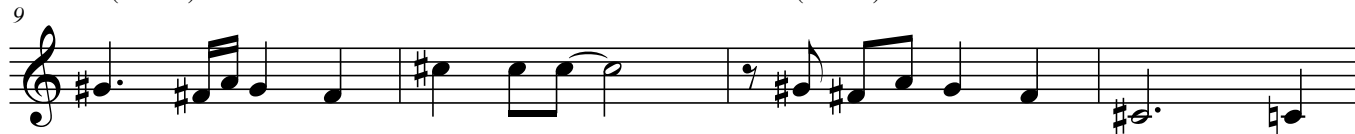
A D(addG#)/F# C#add9/F Esus(addG#) C#/D



B min F#min/A G#7(b9) C#7



D(addG#)/F# C#add9/F Esus(addG#) C#/D



B min F#min D7 C#7 F#min



B F#min F#7 B min C#7



F#min D7 C#7



F#min F#7 B min C#7



F#min Eadd9 DMaj7#11 C#7



Thema ABA
Solo on A
Thema BA

E \flat

Gustavo's Bolero

Matthias Bergmann

$\text{♩} = 90$

A B(addG#)/D# A#add9/D C#sus(addG#) A#/B

5 G#min D#min/F# F7(b9) A#7

9 B(addG#)/D# A#add9/D C#sus(addG#) A#/B

13 G#min D#min B7 A#7 D#min

B D#min D#7 G#min A#7

21 D#min B7 A#7

25 D#min D#7 G#min A#7

29 D#min C#add9 BMaj7#11 A#7

Thema ABA
Solo on A
Thema BA