

Bb

# Terminal 7

Tomasz Stanko

Double Time Latin Feel ♩ = 104

**A**

Open C Pedal

**B**

G#7/C

Cmin

G#7/C

Cmin

G#7/C

Cmin

G#°/C

Bb/C

B/C

Bb/C

F#Maj7(#11)/C

Cmin

E/G# Amin

F#/A# Bmin

G#/C C#min

Bb7b9(#5)

Ebmin

as played on Tomasz Stanko Quintet - Dark Eyes (ECM 2115)

C

# Terminal 7

Tomasz Stanko

Double Time Latin Feel ♩ = 104

**A**

Open Bb Pedal



**B**

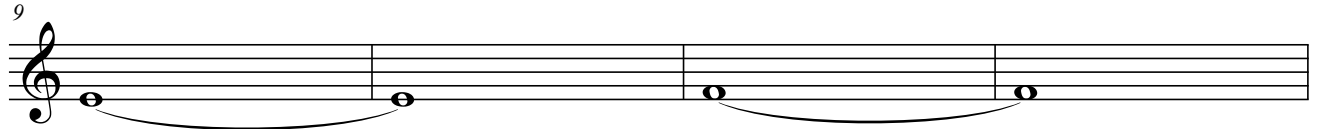
G $\flat$ 7/B $\flat$

B $\flat$ min



G $\flat$ 7/B $\flat$

B $\flat$ min

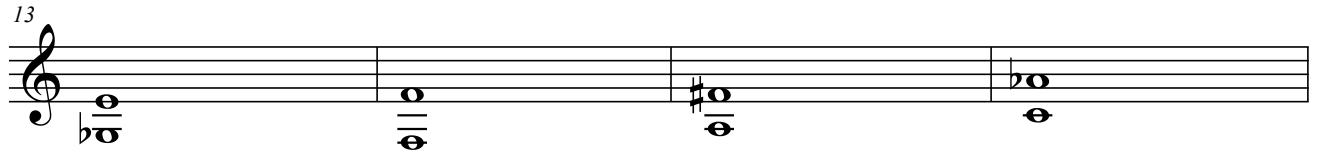


G $\flat$ 7/B $\flat$

B $\flat$ min

F $\sharp$  $\circ$ /B $\flat$

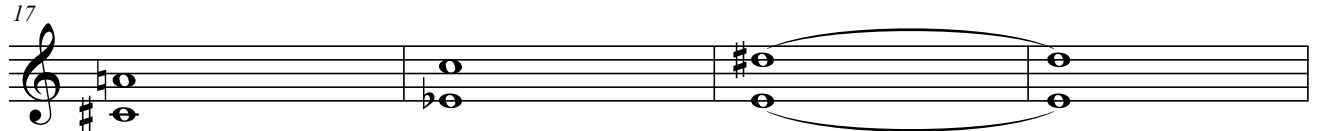
A $\flat$ /B $\flat$



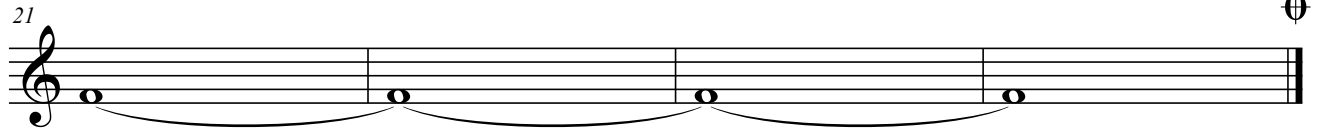
A/B $\flat$

A $\flat$ /B $\flat$

EMaj7(#11)/B $\flat$



B $\flat$ min



D/F $\sharp$

Gmin

E/G $\sharp$

Amin

F $\sharp$ /A $\sharp$

Bmin

A $\flat$ 7 $\flat$ 9(#5)

D $\flat$ min



as played on Tomasz Stanko Quintet - Dark Eyes (ECM 2115)

E♭

# Terminal 7

Tomasz Stanko

Double Time Latin Feel ♩ = 104

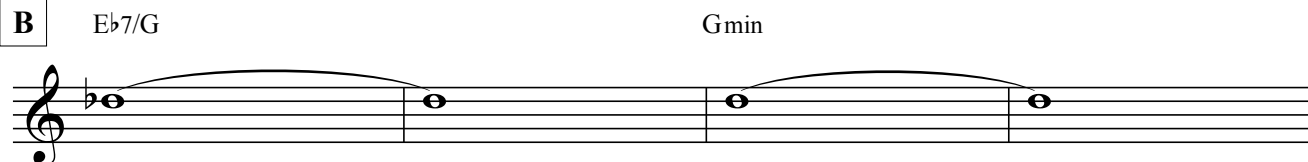
**A**

Open G Pedal



**B**

E♭7/G Gmin



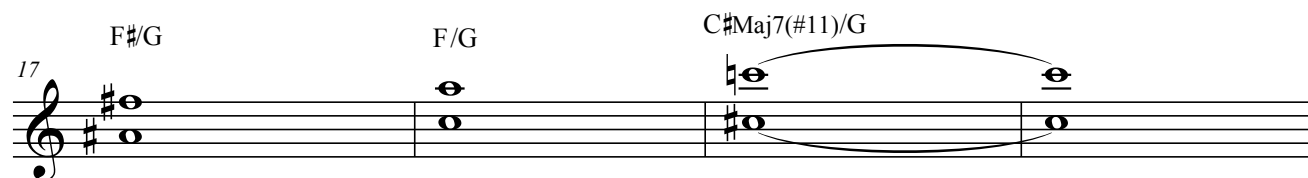
9 E♭7/G Gmin



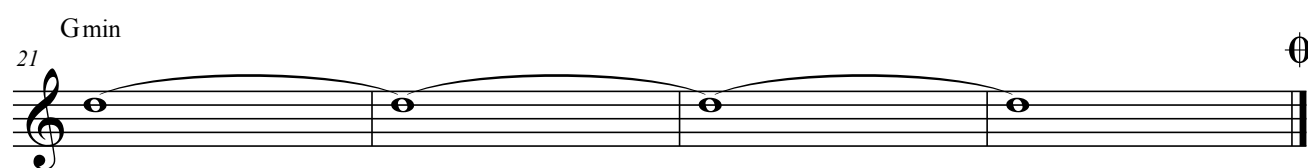
13 E♭7/G Gmin D♯/G F/G



17 F♯/G F/G C♯Maj7(#11)/G



21 Gmin



25 B/D♯ Emin C♯/F F♯min D♯/G G♯min F 7♭9(#5) B♭min



as played on Tomasz Stanko Quintet - Dark Eyes (ECM 2115)