

Bb

Terrestris

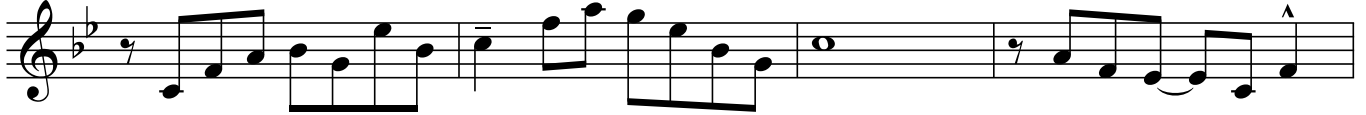
Tom Harrell

♩ = 140 Latin

F7



5



Bb7

9



F7

13



C7

Eb7

17



F7

21



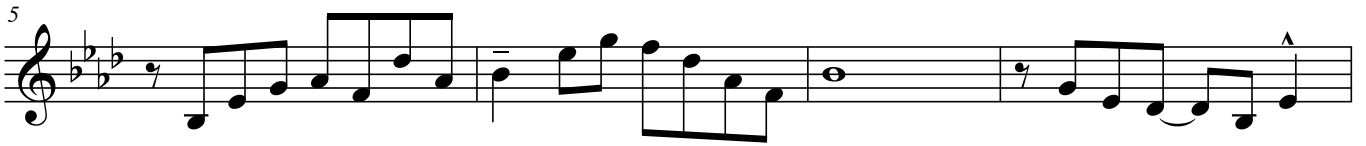
C

Terrestris

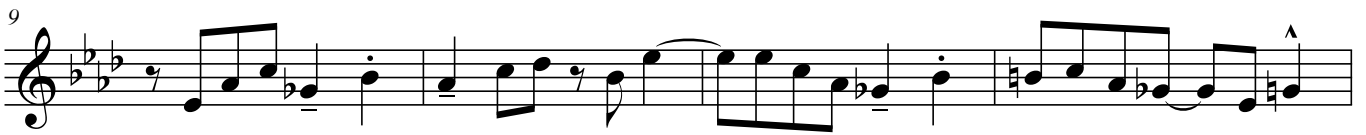
Tom Harrell

♩ = 140 Latin

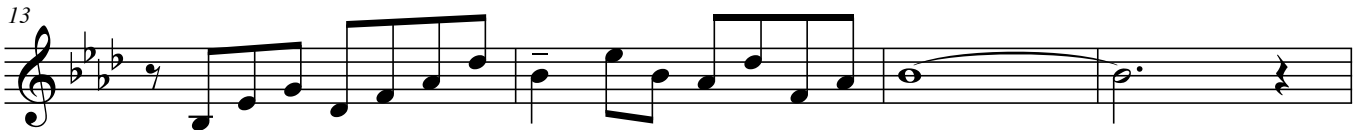
E^b7



A^b7



E^b7



B^b7

D^b7



E^b7



Eb

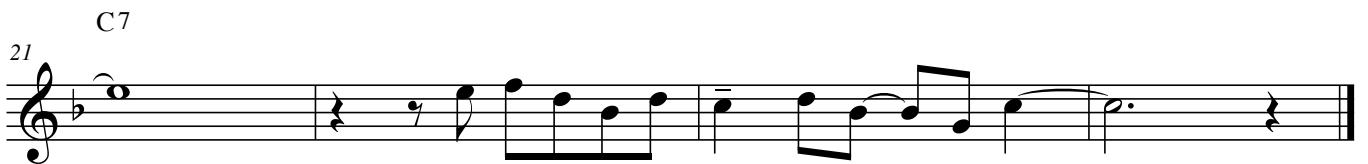
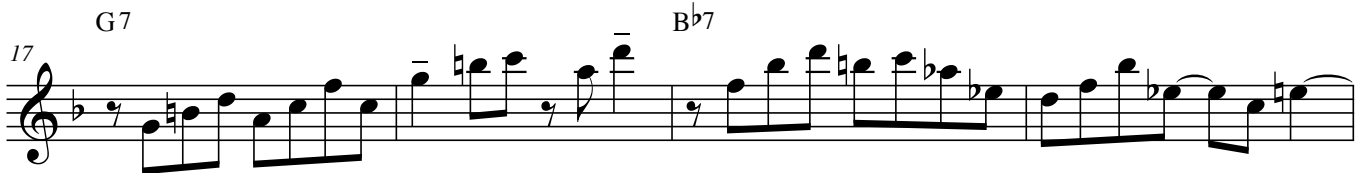
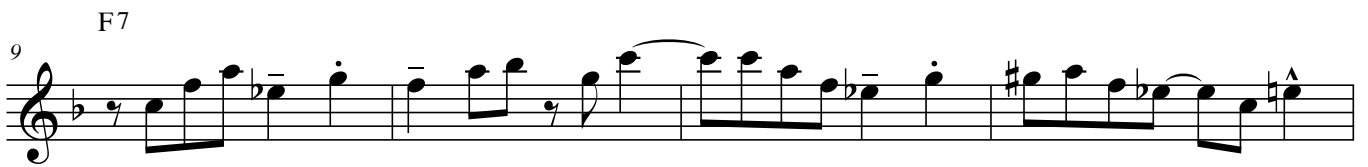
Terrestris

Tom Harrell

♩ = 140

Latin

C7



Trb

Terrestris

Tom Harrell

♩ = 140 Latin

E^b7

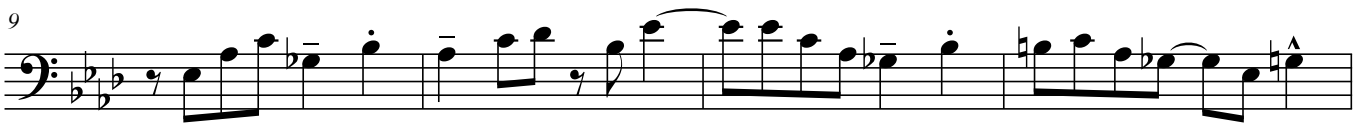


5



A^b7

9



E^b7

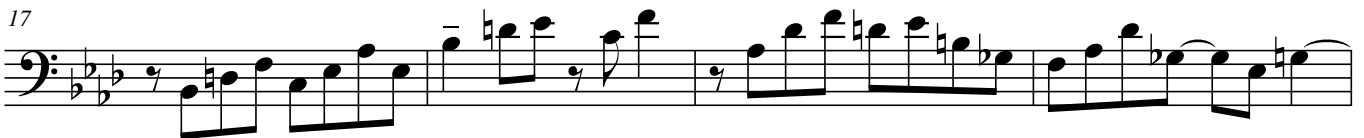
13



B^b7

17

D^b7



E^b7

21

