

C

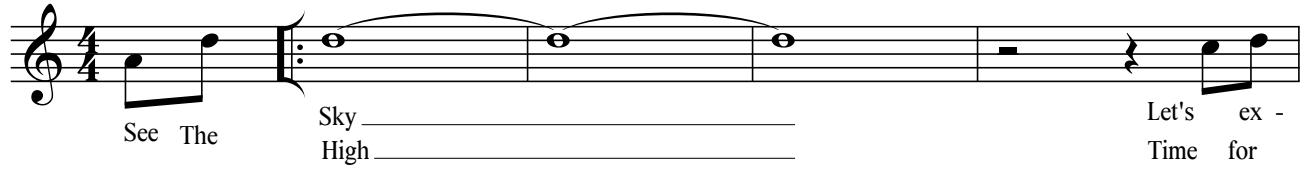
# Maiden Voyage

Herbie Hancock

Lyrics: Jean Hancock  
as sung by Dianne Reeves

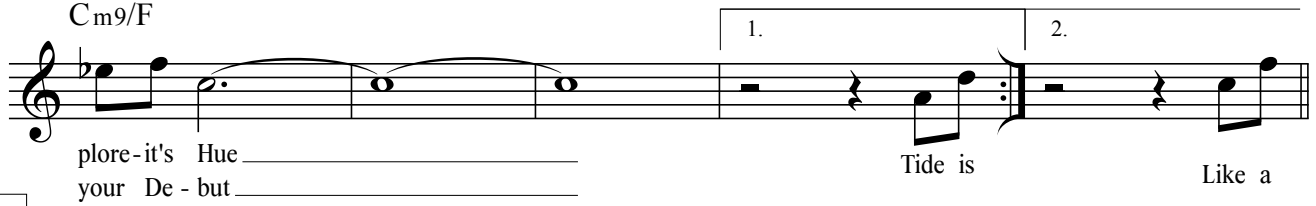
Straight Eights ♩ = 132

**A** Am9/D



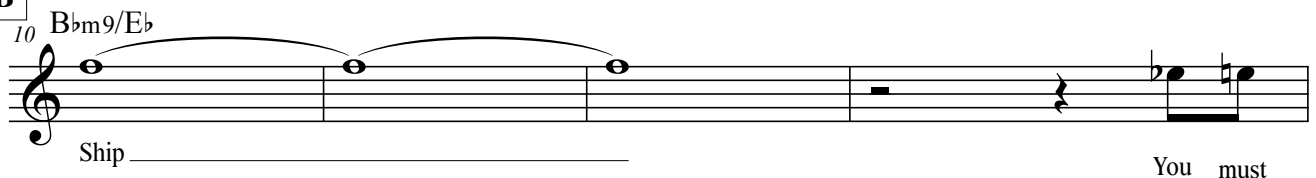
See The Sky High Let's ex - Time for

Cm9/F



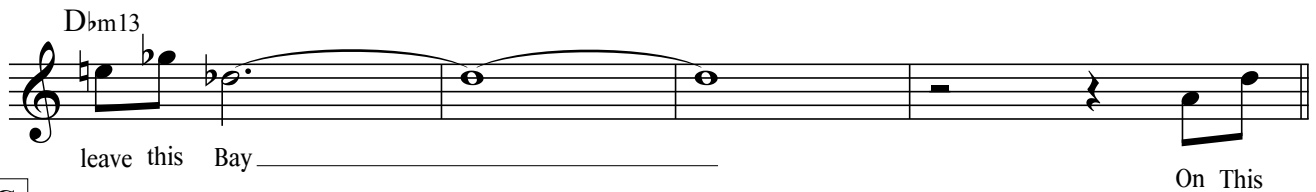
plore-it's Hue your De - but Tide is Like a

**B**



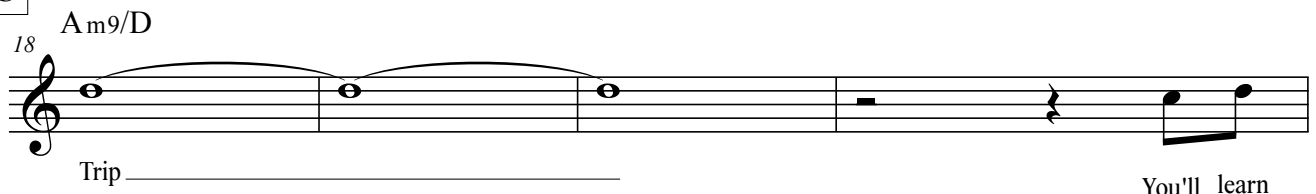
Ship You must

D♭m13



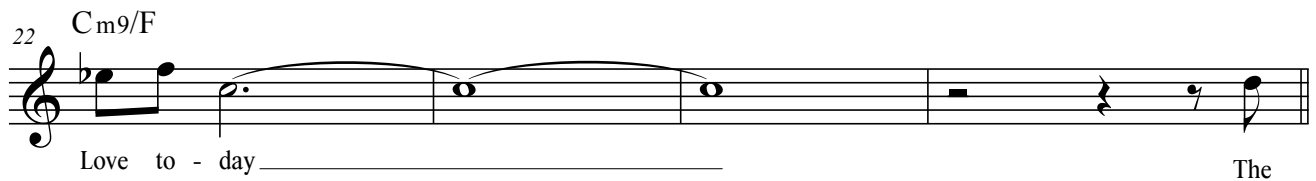
leave this Bay On This

**C**



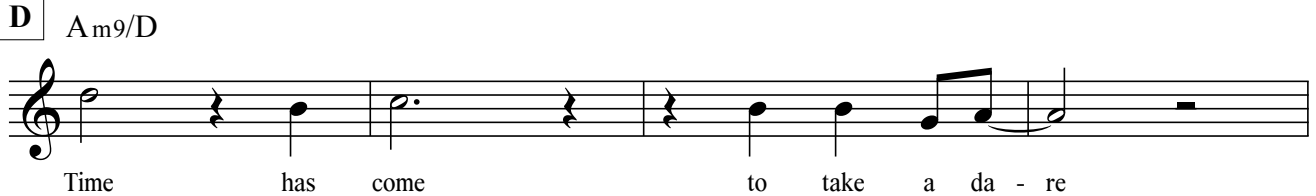
Trip You'll learn

Cm9/F




Love to - day The

**D**



Time has come to take a da - re

30 Cm9/F



Mai - den Vo - yage first af - fair

**E** B $\flat$ m9/E $\flat$ 

set your sails to cast a - way

38 D $\flat$ m13

Chart your Course of Love to - day Now we're

**F** Am9/D

Clear  
Dear Home - ward  
as you

Cm9/F

bound are we Listen Soon You'll  
sound your Sea

**G** 51 B $\flat$ m9/E $\flat$ 

Cry Love ly

D $\flat$ m13

Thoughts You'll Say Sail On

**H**

59 Am9/D

High You'll Learn

63 Cm9/F

Love To - day

SOLOS ON AABC

Bb

# Maiden Voyage

Herbie Hancock  
Lyrics: Jean Hancock  
as sung by Dianne Reeves

Straight Eights ♩ = 132

**A** Bm9/E

See The Sky High Let's ex -  
Time for

plore-it's Hue your De - but Tide is Like a

**B** 10 Cm9/F

Ship You must

leave this Bay On This

**C** 18 Bm9/E

Trip You'll learn

Love to - day The

**D** Bm9/E

Time has come to take a da - re

30 Dm9/G

Mai - den Vo - yage first af - fair

**E** Cm9/F

set your sails to cast a - way

38 Ebm13

Chart your Course of Love to - day Now we're

**F** Bm9/E

Clear \_\_\_\_\_ Home-ward  
Dear \_\_\_\_\_ as you

Dm9/G

bound are we \_\_\_\_\_ Listen \_\_\_\_\_  
sound your Sea \_\_\_\_\_ Soon You'll

**G** 51 Cm9/F

Cry \_\_\_\_\_ Love ly

Ebm13

Thoughts You'll Say \_\_\_\_\_ Sail On

**H** 59 Bm9/E

High \_\_\_\_\_ You'll Learn

63 Dm9/G

Love To - day \_\_\_\_\_

SOLOS ON AABC

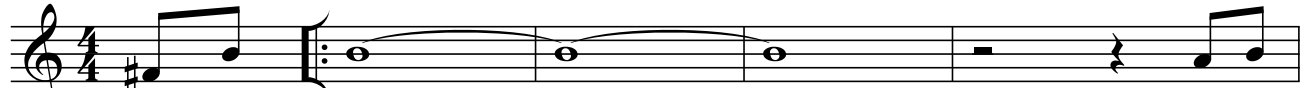
Eb

# Maiden Voyage

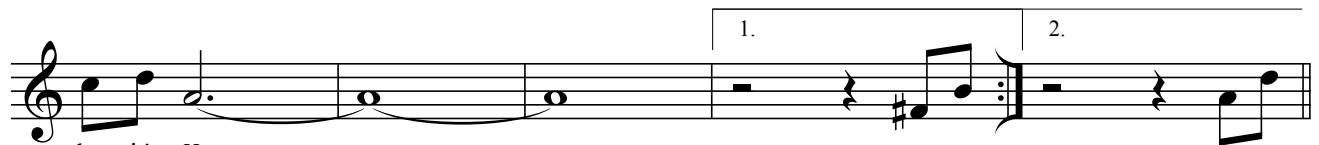
Herbie Hancock  
Lyrics: Jean Hancock  
as sung by Dianne Reeves

Straight Eights ♩ = 132

**A** F#m9/B

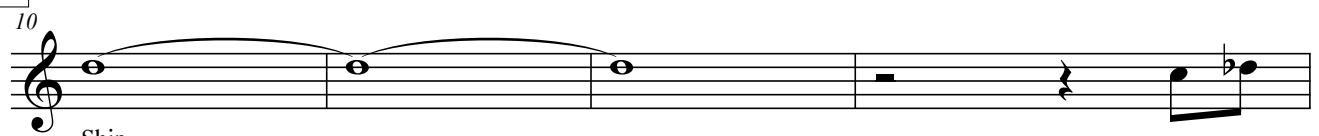


See The Sky \_\_\_\_\_ Let's ex -  
High \_\_\_\_\_ Time for

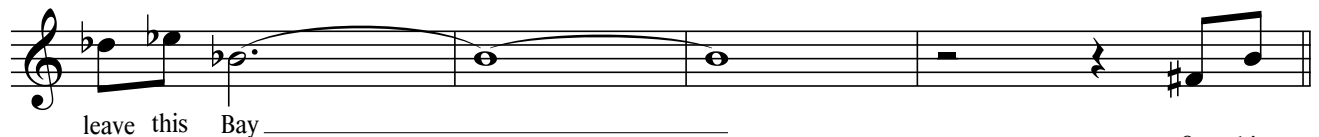


plore-it's Hue \_\_\_\_\_ Tide is Like a  
your De - but \_\_\_\_\_

**B** Gm9/C

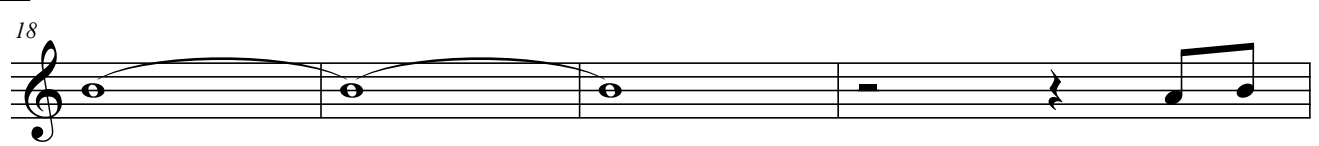


Ship \_\_\_\_\_ You must

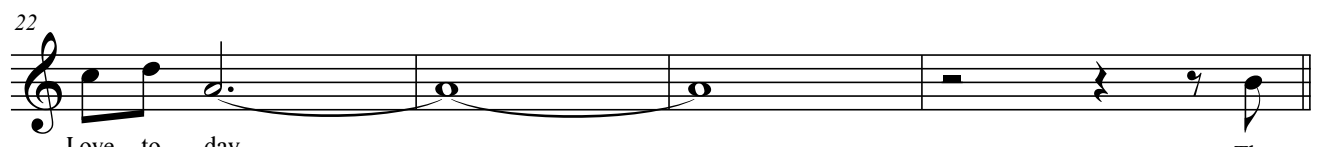


leave this Bay \_\_\_\_\_ On This

**C** F#m9/B

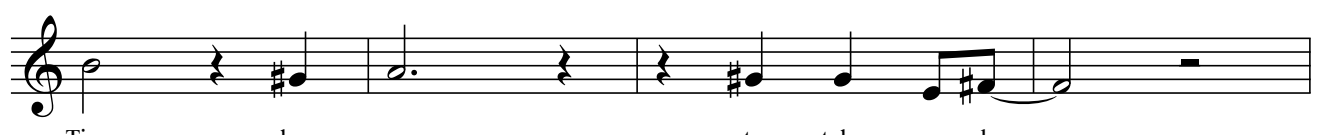


Trip \_\_\_\_\_ You'll learn



Love to - day \_\_\_\_\_ The

**D** F#m9/B



Time has come to take a da - re



Mai - den Vo - yage first af - fair

**E** Gm9/C

set your sails to cast a - way

38 Bbm13

Chart your Course of Love to - day Now we're

**F** F#m9/B

Clear \_\_\_\_\_ Home - ward  
Dear \_\_\_\_\_ as you

Am9/D

bound are we \_\_\_\_\_ Listen  
sound your Sea \_\_\_\_\_ Soon You'll

**G** Gm9/C

Cry \_\_\_\_\_ Love ly

Bbm13

Thoughts You'll Say \_\_\_\_\_ Sail On

**H** F#m9/B

High \_\_\_\_\_ You'll Learn

Am9/D

Love To - day \_\_\_\_\_

SOLOS ON AABC