

C

When Love Is New

straight 8ths ♩ = 120

Cedar Walton

Intro

F m7(b5)/B♭

B♭7♭9(#11)

E♭m7(b5)/A♭

A♭7♭9(#11)

G Maj7

C Maj7(#11)

B Maj7

B♭7♭9(#11)

E♭7(#9)

5

A

F m7(b5)/B♭

B♭7♭9(#11)

E♭m9

A♭7(#11)

E m9

A 7(#11)

D Maj7

E m7

F#m7

B m7

13

G m9

E m7(b5)

A 7

D m7

G 7(#11)

17

C m7

F 7♭9(#11)

D sus4/E

A 7♭9(13)

A 7♭9(b13)

21

B

F m7(b5)/B♭

B♭7♭9(#11)

E♭m7(b5)

A♭7(#11)

G Maj7

C Maj7(#11)

B Maj7

B♭7♭9(#11) E♭7(#9)

29

Fine

C

When Love Is New

Cedar Walton
Lyrics by John &
Paula Hackett

straight 8ths ♩ = 120

Intro F m7(b5)/B♭ B♭7b9(#11) E♭m7(b5)/A♭ A♭7b9(#11)

G Maj7 C Maj7(#11) B Maj7 B♭7b9(#11) E♭7(#9)

5

A F m7(b5)/B♭ B♭7b9(#11) E♭m9 A♭7(#11)

Love did is new Love lasts for - ev - er
it start _____ you re - mem - ber _____

Em9 A 7(#11) D Maj7 Em7 F#m7 B m7

13

Then when for - e - ver slips a - way
when our love was all we had _____

G m9 Em7(b5) A 7 D m7 G 7(#11)

17

For to - night _____ be mine once a - gain _____ come
were we wrong _____ or were we the ones _____ who

C m7 F 7b9(#11) D sus4/E A 7b9(13) A 7b9(b13)

21

back to the time I knew you when our love was new just like now _____ How
had ev - ry - thing the things that e - ven time could not steal a - way _____ And
Let's

B F m7(b5)/B♭ B♭7b9(#11) E♭m7(b5) A♭7(#11)

now to - night _____ caught in go the same spell _____ we
take this chance _____ let's go back a - gain _____ and

G Maj7 C Maj7(#11) B Maj7 B♭7b9(#11) E♭7(#9)

29

find that our love was meant to last
find that our love is meant to last

Fine

Bb

When Love Is New

straight 8ths ♩ = 120

Cedar Walton

Intro

Gm7(b5)/C

C7b9(#11)

Fm7(b5)/Bb

Bb7b9(#11)



AMaj7

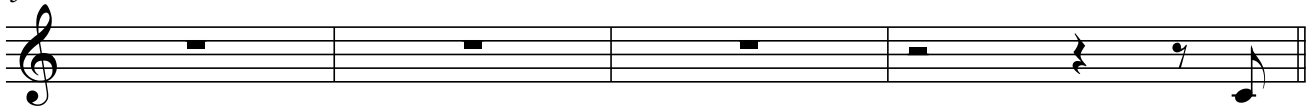
DMaj7(#11)

C#Maj7

C7b9(#11)

F7(#9)

5



A

Gm7(b5)/C

C7b9(#11)

Fm9

Bb7(#11)



F#m9

B7(#11)

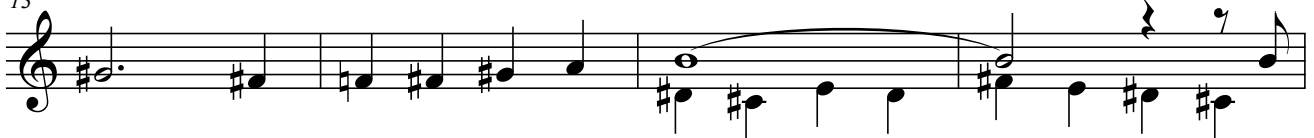
EMaj7

F#m7

G#m7

C#m7

13



Am9

F#m7(b5)

B7

Em7

A7(#11)

17



Dm7

G7b9(#11)

Esus4/F#

B7b9(13)

B7b9(b13)

21



B

Gm7(b5)/C

C7b9(#11)

Fm7(b5)

Bb7(#11)



AMaj7

DMaj7(#11)

C#Maj7

C7b9(#11) F7(#9)

29



Fine

E \flat

When Love Is New

straight 8ths ♩ = 120

Cedar Walton

Intro Dm7(b5)/G G7 \flat 9(#11) Cm7(b5)/F F7 \flat 9(#11)

5 EMaj7 AMaj7(#11) G#Maj7 G7 \flat 9(#11) C7(#9)

A Dm7(b5)/G G7 \flat 9(#11) Cm9 F7(#11)

13 C#m9 F#7(#11) B#Maj7 C#m7 D#m7 G#m7

17 Em9 C#m7(b5) F#7 Bm7 E7(#11)

21 Am7 D7 \flat 9(#11) Bsus4/C# F#7 \flat 9(13) F#7 \flat 9(b13)

B Dm7(b5)/G G7 \flat 9(#11) Cm7(b5) F7(#11)

29 EMaj7 AMaj7(#11) G#Maj7 G7 \flat 9(#11) C7(#9)

Fine