

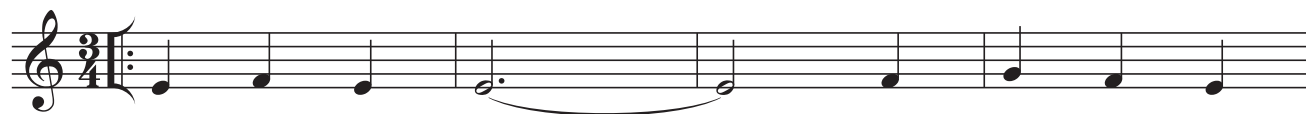
C

Canter No. 6

Kenny Wheeler

♩ = 188

CMaj7/G



E/F



CMaj7/G



E/F



C#/D

C/D



GMaj7(#5)

GMaj7(#11)/F#



Bmin

BbMaj7



Amin

BbMaj7(#11)/A



Bb

Canter No. 6

Kenny Wheeler

♩ = 188

DMaj7/A

5 F#/G

9 DMaj7/A

13 F#/G

17 D#/E D/E

21 AMaj7(#5) AMaj7(#11)/G#

25 C#min CMaj7

29 Bmin CMaj7(#11)/B

Eb

Canter No. 6

Kenny Wheeler

♩ = 188

A Maj7/E

5 C#/D

9 A Maj7/E

13 C#/D

17 A#/B A/B

21 EMaj7(#5) EMaj7(#11)/D#

25 G#min GMaj7

29 F#min GMaj7(#11)/F#