

# Speak Like A Child

Herbie Hancock

Med. Bossa ♩ = 126

**A** C#7(alt.) G#7(alt.)

5 B $\flat$ 13 B $\flat$ 7(#5) B $\flat$ min9 Eb13

9 A $\flat$ 13sus4 A $\flat$ 13(b9) G7(alt.)

13 G $\flat$ Maj7(#11) F#o7(add9)

17 Eb9sus Eb13 Ebmin9 D7(#9)

21 C#7(alt.) B $\flat$ 7(alt.) Amin9 E9sus

25 Amin9 E9sus Amin9 E9sus

**B** C#7(alt.)

G#7(alt.)



Bb13

Bb7(#5)

A 13

33



Ab13sus

Ab13(b9)

G7(alt.)

37



GbMaj7(#11)

F#o7(add9)

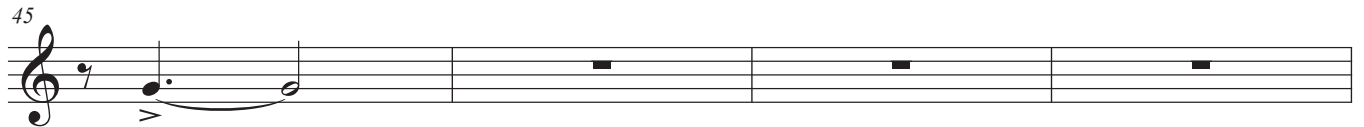
41



DbMaj7(b5)/F

GbMaj7(#11)

45



C/Db

Bb/C

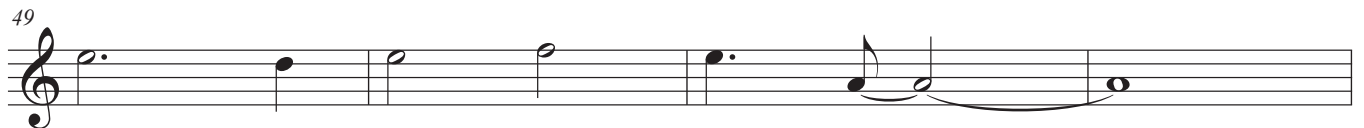
C/B

Bbmin7

Amin9

E9sus

49



Amin9

E9sus

**C**

Amin9

E9sus

53



Amin9

E9sus

57



open Vamp till Cue  
On Cue Solo on Form ABC

# Speak Like A Child

Herbie Hancock

Med. Bossa ♩ = 126

**A** F#7(alt.) C#7(alt.)

5 Eb13 Eb7(#5) Ebmin9 Ab13

9 Db13sus4 Db13(b9) C7(alt.)

13 BMaj7(#11) Bo7(add9)

17 Ab9sus Ab13 Abmin9 G7(#9)

21 F#7(alt.) Eb7(alt.) Dmin9 A9sus

25 Dmin9 A9sus Dmin9 A9sus

**B** F#7(alt.)

C#7(alt.)



Eb13

Eb7(#5)

D13

33



Db13sus

Db13(b9)

C7(alt.)

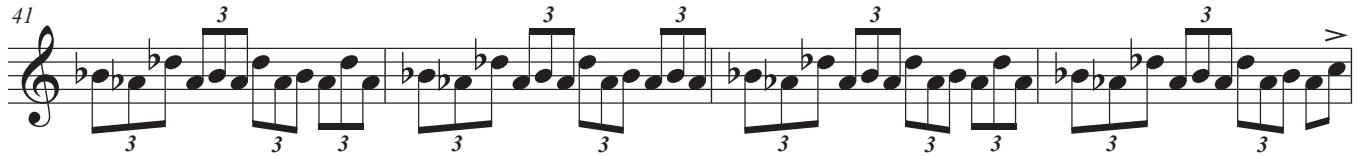
37



B Maj7(#11)

B o7(add9)

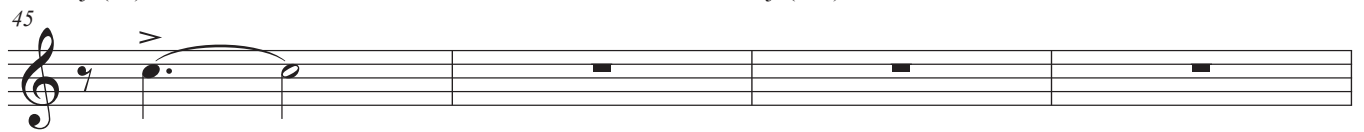
41



Gb Maj7(b5)/Bb

B Maj7(#11)

45



F/Gb

Eb/F

F/E

Ebmin7

Dmin9

A9sus

49



Dmin9

A9sus

**C**

Dmin9

A9sus

53



Dmin9

A9sus

57



open Vamp till Cue  
On Cue Solo on Form ABC

# Speak Like A Child

Herbie Hancock

Med. Bossa ♩ = 126

**A** D#7(alt.) A#7(alt.)

5 C 13 C7(#5) Cmin9 F 13

9 Bb13sus4 Bb13(b9) A7(alt.)

13 AbMaj7(#11) G#o7(add9)

17 F9sus F 13 F min9 E7(#9)

21 D#7(alt.) C7(alt.) Bmin9 F#9sus

25 Bmin9 F#9sus Bmin9 F#9sus

**B** D#7(alt.)

A#7(alt.)



C 13

C7(#5)

B 13

33



Bb13sus

Bb13(b9)

A7(alt.)

37



AbMaj7(#11)

G#o7(add9)

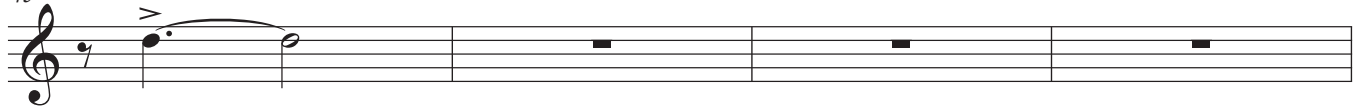
41



EbMaj7(b5)/G

AbMaj7(#11)

45



D/Eb

C/D

D/C#

Cmin7

Bmin9

F#9sus

49



Bmin9

F#9sus

**C**

Bmin9

F#9sus

53



Bmin9

F#9sus

57



open Vamp till Cue  
On Cue Solo on Form ABC

Trb 3rd Part

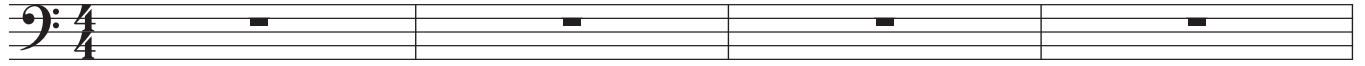
# Speak Like A Child

Herbie Hancock

Med. Bossa ♩ = 126

**A** C#7(alt.)

G#7(alt.)

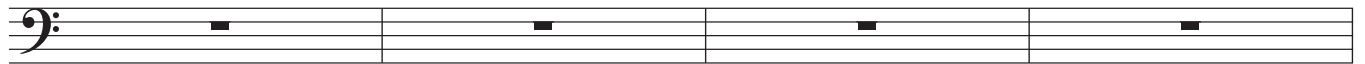


5 Bb13

Bb7(#5)

Bbmin9

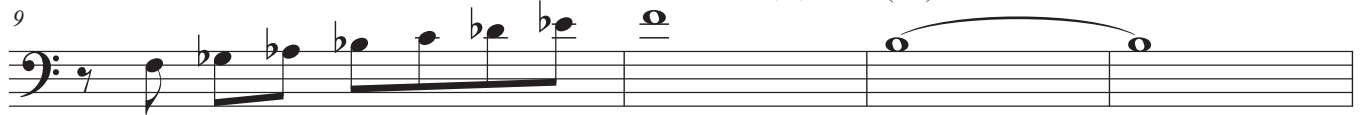
Eb13



9 Ab13sus4

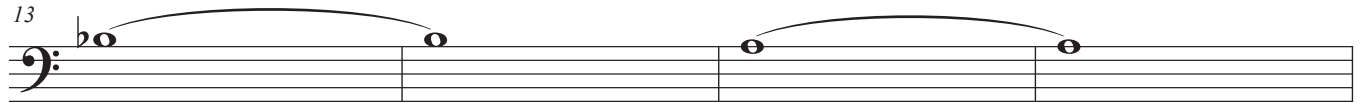
Ab13(b9)

G7(alt.)



13 GbMaj7(#11)

F#o7(add9)



17 Eb9sus

Eb13

Ebmin9

D7(#9)



21 C#7(alt.)

Bb7(alt.)

Amin9

E9sus



25 Amin9

E9sus

Amin9

E9sus



**B** C#7(alt.) G#7(alt.)

33 Bb13 Bb7(#5) A13

37 Ab13sus Ab13(b9) G7(alt.)

41 GbMaj7(#11) F#o7(add9)

45 DbMaj7(b5)/F GbMaj7(#11)

49 C/Db Bb/C C/B Bbmin7 Amin9 E9sus

53 Amin9 E9sus **C** Amin9 E9sus

57 Amin9 E9sus

open Vamp till Cue  
On Cue Solo on Form ABC