

C

# Old Time

Kenny Wheeler  
Norma Winstone

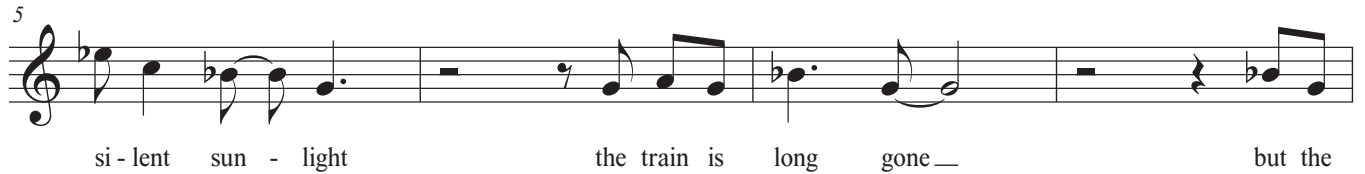
Second Line Groove ♩ = 192

(How it Was Then)

**A** G7(#9)



Ri - ding \_ a de - si - red track in the



si - lent sun - light the train is long gone \_ but the



air is on \_ me with the me - mo - ry \_ of how it was



then ne - ver a - gain \_ a lit - tle whis - per of the

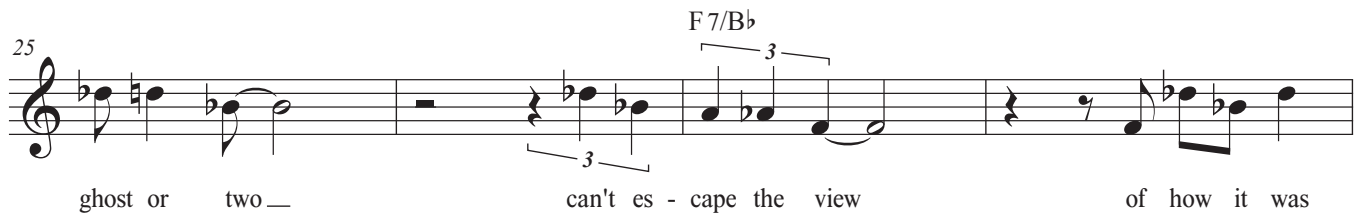
**B** Bb7(#9)



old time \_ from a dus - ty road though the



fields of cot - ton may be long for - got \_ ten there's a



ghost or two \_ can't es - cape the view of how it was



then ne - ver a - gain \_ the sound of voi - ces in the

**C** G7(#9)

eve - ning \_\_\_ in the su - den dark now and

37

then you hear them when you're wea - ry \_\_\_ you des -

41

D7/G

cent the val - ley where the wa - ters raise from hea - ven knows

45

G7(#9)

where to - wards a new time \_\_\_

C

# Old Time

Kenny Wheeler  
Norma Winstone

Second Line Groove ♩ = 192

(How it Was Then)

**A** G7(#9)



**B** Bb7(#9)



**C** G7(#9)

Bb

# Old Time

Kenny Wheeler  
Norma Winstone

Second Line Groove ♩ = 192

(How it Was Then)

**A** A7(#9)



**B** C7(#9)



**C** A7(#9)

37



41

E7/A



45

A7(#9)



E $\flat$

# Old Time

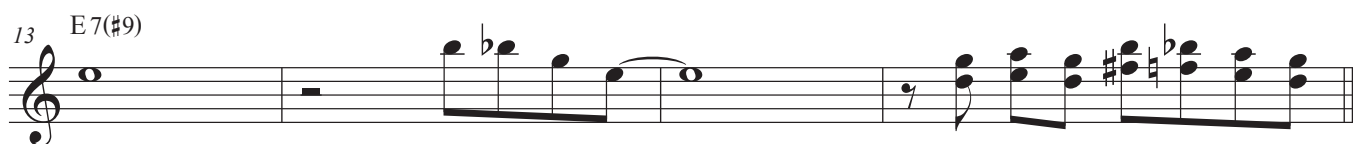
Kenny Wheeler

Norma Winstone

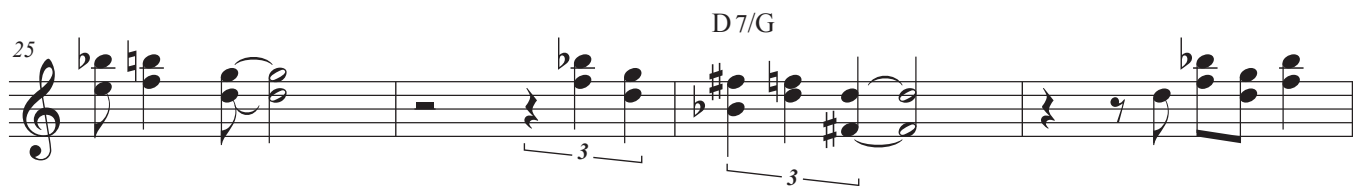
Second Line Groove ♩ = 192

(How it Was Then)

**A** E7(#9)



**B** G7(#9)



**C** E7(#9)