

C

Tetris

Latin $\text{♩} = 120$

Wolfgang Engstfeld

A F min7

E7



E♭Maj7

D7



D♭Maj7

G7



C Maj7

E7



A Maj7

C7



F Maj7

D♭7



G♭Maj7

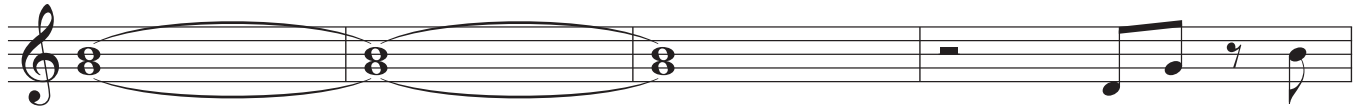
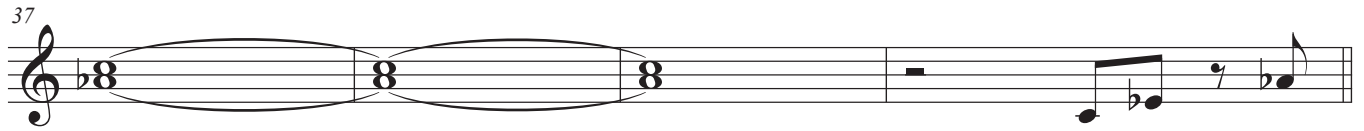
B Maj7



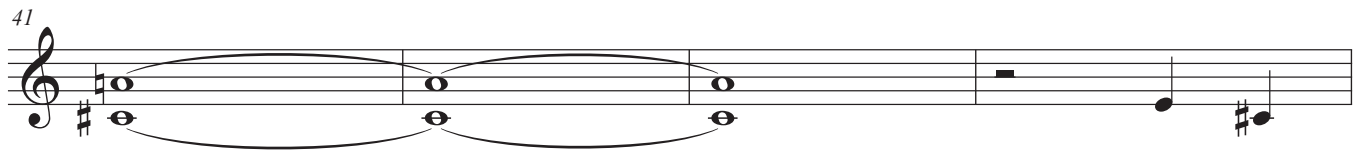
G7

C7



B G/FA^b/D

A/G

A^b/C

as played on Randy Brecker / Wolfgang Engstfeld / Gunnar Plümer / Peter Weiss - Together

Bb

Tetris

Latin ♩ = 120

Wolfgang Engstfeld

A Gmin7

F#7



F Maj7

E7



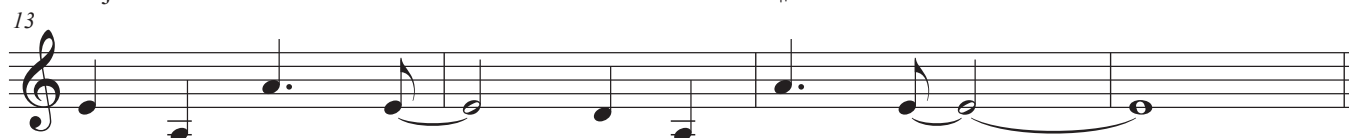
E♭Maj7

A7



D Maj7

F#7



B Maj7

D7



G Maj7

E♭7



A♭Maj7

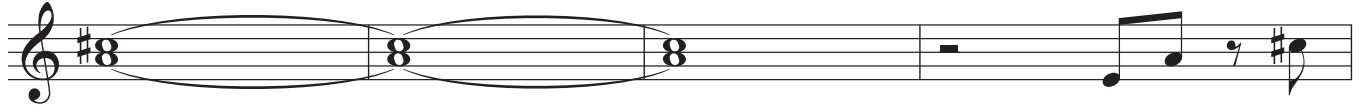
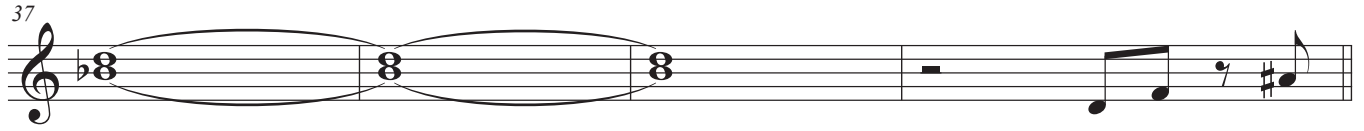
D♭Maj7



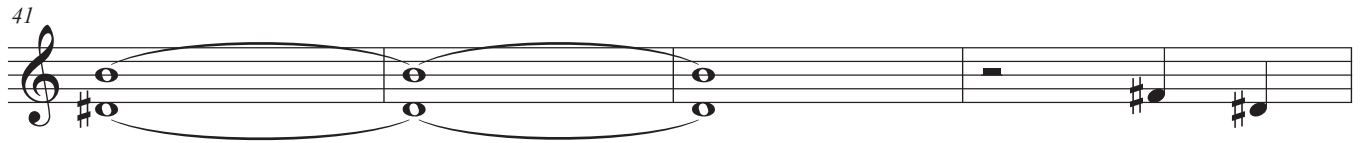
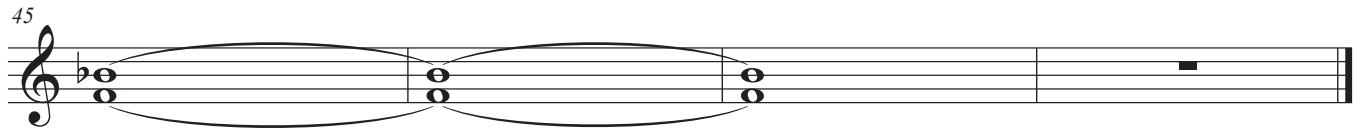
A7

D7



B A/GB \flat /E

B/A

B \flat /D

as played on Randy Brecker / Wolfgang Engstfeld / Gunnar Plümer / Peter Weiss - Together

Eb

Tetris

Latin ♩ = 120

Wolfgang Engstfeld

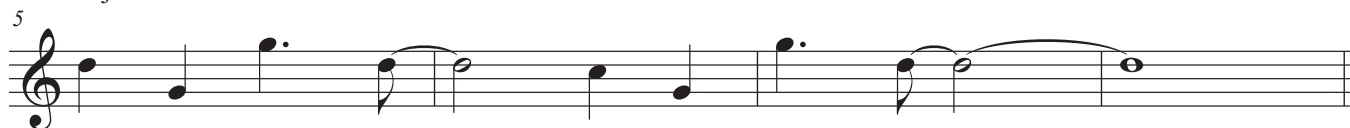
A Dmin7

C#7



C Maj7

B7



Bb Maj7

E7



A Maj7

C#7



F# Maj7

A7



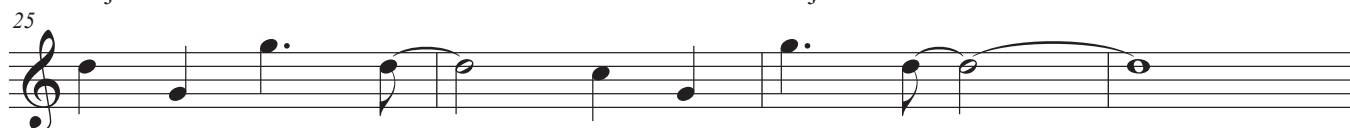
DMaj7

Bb7



Eb Maj7

Ab Maj7



E7

A7



B E/D

37 F/B

41 F#/E

45 F/A

as played on Randy Brecker / Wolfgang Engstfeld / Gunnar Plümer / Peter Weiss - Together