

C

The Challenge

Stephen Scott

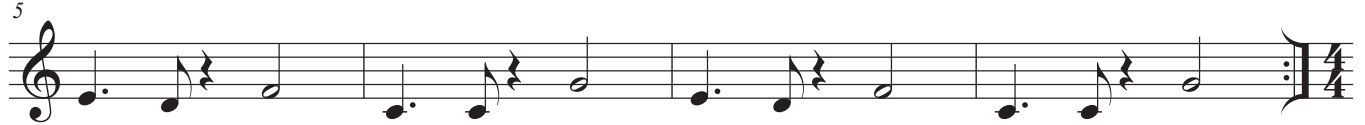
Swing ♩ = 218

Intro

GMaj7(#11) F#7(b9) GMaj7(#11) F#7(#9) GMaj7(#11) F#7(b9) GMaj7(#11) F#7(#9)



FMaj7(#11) E7(b9) FMaj7(#11) E7(#9) FMaj7(#11) E7(b9) FMaj7(#11) E7(#9)



A

Am9 (blowing)



Cm9 Cm9 F7



B

BbMaj7 A7(#9) AbMaj7 G7(#9)



GbMaj7 Gb7(#9) FMaj7 E7(#9)



Solos on Recordame Changes 4/4 Swing

as played on Roy Hargrove - Family

The Challenge

Bb

Stephen Scott

Swing ♩ = 218

Intro AMaj7(#11) G#7(b9) AMaj7(#11) G#7(#9) AMaj7(#11) G#7(b9) AMaj7(#11) G#7(#9)

5 GMaj7(#11) F#7(b9) GMaj7(#11) F#7(#9) GMaj7(#11) F#7(b9) GMaj7(#11) F#7(#9)

A Bm9 (blowing)

13 Dm9 Dm9 G7

B CMaj7 B7(#9) BbMaj7 A7(#9)

21 AbMaj7 Ab7(#9) GMaj7 F#7(#9)

Solos on Recordame Changes 4/4 Swing

as played on Roy Hargrove - Family

The Challenge

Eb

Stephen Scott

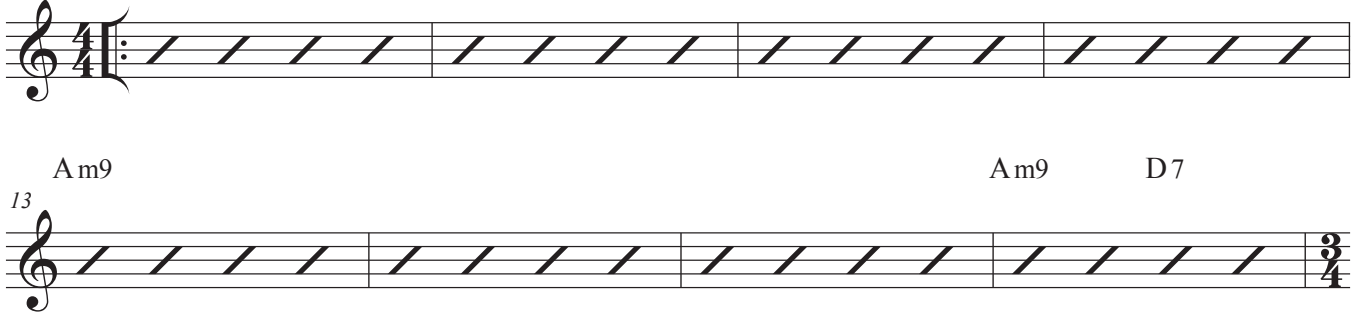
Swing ♩ = 218

Intro EMaj7(#11) D#7(b9) EMaj7(#11) D#7(#9) EMaj7(#11) D#7(b9) EMaj7(#11) D#7(#9)



5 DMaj7(#11) C#7(b9) DMaj7(#11) C#7(#9) DMaj7(#11) C#7(b9) DMaj7(#11) C#7(#9)

A F#m9 (blowing)



Am9 Am9 D7

B GMaj7 F#7(#9) FMaj7 E7(#9)



21 EbMaj7 Eb7(#9) DMaj7 C#7(#9)

Solos on Recordame Changes 4/4 Swing

as played on Roy Hargrove - Family