

Bb

Canter No. 6 (May Ride)

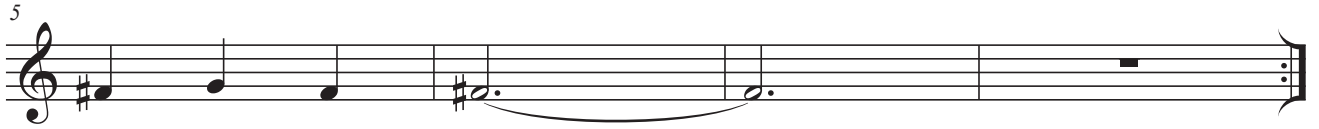
Kenny Wheeler

♩ = 188

DMaj7/A



F#/G



DMaj7/A



F#/G



D#/E

D/E



AMaj7(#5)

AMaj7(#11)/G#



C#min

CMaj7



Bmin

CMaj7(#11)/B



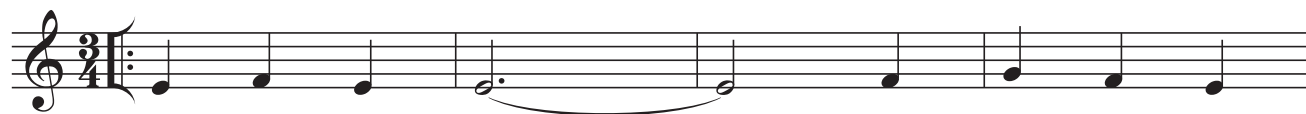
C

Canter No. 6 (May Ride)

Kenny Wheeler

♩ = 188

CMaj7/G



E/F



CMaj7/G



E/F



C#/D

C/D



GMaj7(#5)

GMaj7(#11)/F#



Bmin

BbMaj7



Amin

BbMaj7(#11)/A



Eb

Canter No. 6 (May Ride)

Kenny Wheeler

♩ = 188

A Maj7/E

5 C#/D

9 A Maj7/E

13 C#/D

17 A#/B A/B

21 EMaj7(#5) EMaj7(#11)/D#

25 G#min GMaj7

29 F#min GMaj7(#11)/F#