

Kind Folk

Kenny Wheeler

A AMaj7(#11)

C#m11



AMaj7(#11)

C#m11



GMaj7(#11)

G#m7(b5)

DMaj7/A

Bb7(alt)



Eb7

BMaj7(#11)

Bbm11

Abm11

**B** CMaj7(#11)

Bm11

Em11

CMaj7(#11)



Bm11

Em11

CMaj7

Bm11



BbMaj7(#11)

Bm7(b5)

FMaj7/C

C#7(alt)



F#m7

DMaj7(#11)

C#m7

Bm11



Kind Folk

Kenny Wheeler

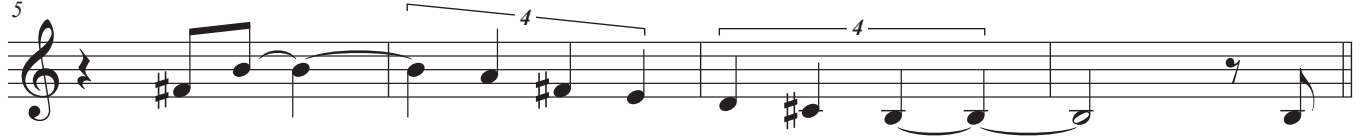
A GMaj7(#11)

Bm11



GMaj7(#11)

Bm11



FMaj7(#11)

F#m7(b5)

CMaj7/G

G#7(alt)



C#m7

AMaj7(#11)

G#m11

F#m11

**B** BbMaj7(#11)

Am11

Dm11

BbMaj7(#11)



Am11

Dm11

BbMaj7

Am11



AbMaj7(#11)

Am7(b5)

EbMaj7/Bb

B7(alt)



Em7

CMaj7(#11)

Bm7

Am11



Eb

Kind Folk

Kenny Wheeler

A EMaj7(#11)

G#m11

Musical staff 1 for section A, starting at measure 1. It features a treble clef and a 3/4 time signature. The melody begins with a quarter rest, followed by a quarter note G#4, a quarter note A4, and a dotted quarter note B4. A slur covers the next three notes: G#4, A4, and B4. A triplet of eighth notes (G#4, A4, B4) follows, then a quarter note G#4, a quarter note F#4, and a dotted quarter note E4.

EMaj7(#11)

G#m11

Musical staff 2 for section A, starting at measure 5. It begins with a quarter rest, followed by a quarter note G#4, a quarter note A4, and a dotted quarter note B4. A slur covers the next three notes: G#4, A4, and B4. A triplet of eighth notes (G#4, A4, B4) follows, then a quarter note G#4, a quarter note F#4, and a dotted quarter note E4. A slur covers the next four notes: D#4, C#4, B4, and A4. The staff ends with a quarter rest and a quarter note G#4.

DMaj7(#11)

D#m7(b5)

AMaj7/E

F7(alt)

Musical staff 3 for section A, starting at measure 9. It begins with a quarter rest, followed by a quarter note G#4, a quarter note A4, and a dotted quarter note B4. A slur covers the next three notes: G#4, A4, and B4. A triplet of eighth notes (G#4, A4, B4) follows, then a quarter note G#4, a quarter note F#4, and a dotted quarter note E4. A slur covers the next four notes: D#4, C#4, B4, and A4. The staff ends with a quarter rest and a quarter note G#4.

Bbm7

F#Maj7(#11)

Fm11

Ebm11

Musical staff 4 for section A, starting at measure 13. It begins with a quarter rest, followed by a quarter note G#4, a quarter note A4, and a dotted quarter note B4. A slur covers the next three notes: G#4, A4, and B4. A triplet of eighth notes (G#4, A4, B4) follows, then a quarter note G#4, a quarter note F#4, and a dotted quarter note E4. A slur covers the next four notes: D#4, C#4, B4, and A4. The staff ends with a quarter rest and a quarter note G#4.

B GMaj7(#11)

F#m11

Bm11

GMaj7(#11)

Musical staff 1 for section B, starting at measure 17. It begins with a quarter rest, followed by a quarter note G#4, a quarter note A4, and a dotted quarter note B4. A slur covers the next three notes: G#4, A4, and B4. A triplet of eighth notes (G#4, A4, B4) follows, then a quarter note G#4, a quarter note F#4, and a dotted quarter note E4. A slur covers the next four notes: D#4, C#4, B4, and A4. The staff ends with a quarter rest and a quarter note G#4.

F#m11

Bm11

GMaj7

F#m11

Musical staff 2 for section B, starting at measure 21. It begins with a quarter rest, followed by a quarter note G#4, a quarter note A4, and a dotted quarter note B4. A slur covers the next three notes: G#4, A4, and B4. A triplet of eighth notes (G#4, A4, B4) follows, then a quarter note G#4, a quarter note F#4, and a dotted quarter note E4. A slur covers the next four notes: D#4, C#4, B4, and A4. The staff ends with a quarter rest and a quarter note G#4.

FMaj7(#11)

F#m7(b5)

CMaj7/G

G#7(alt)

Musical staff 3 for section B, starting at measure 25. It begins with a quarter rest, followed by a quarter note G#4, a quarter note A4, and a dotted quarter note B4. A slur covers the next three notes: G#4, A4, and B4. A triplet of eighth notes (G#4, A4, B4) follows, then a quarter note G#4, a quarter note F#4, and a dotted quarter note E4. A slur covers the next four notes: D#4, C#4, B4, and A4. The staff ends with a quarter rest and a quarter note G#4.

C#m7

AMaj7(#11)

G#m7

F#m11

Musical staff 4 for section B, starting at measure 29. It begins with a quarter rest, followed by a quarter note G#4, a quarter note A4, and a dotted quarter note B4. A slur covers the next three notes: G#4, A4, and B4. A triplet of eighth notes (G#4, A4, B4) follows, then a quarter note G#4, a quarter note F#4, and a dotted quarter note E4. A slur covers the next four notes: D#4, C#4, B4, and A4. The staff ends with a quarter rest and a quarter note G#4.