

C

The Soothsayer

Up Swing ♩ = 220

Wayne Shorter

Intro

A

C#m7 D7(#11) C#m7 D7(#11)

9 C#m7 D7(#11) C#m7 D7(#11)

13 F#m7 G7(#11) F#m7 G7(#11)

17 F#m7 G7(#11) G#7b9(b13) Dm11 C#m9

(only 1st)

B

Fine

Solo on A
Head out AAB

as played on Wayne Shorter - The Soothsayer

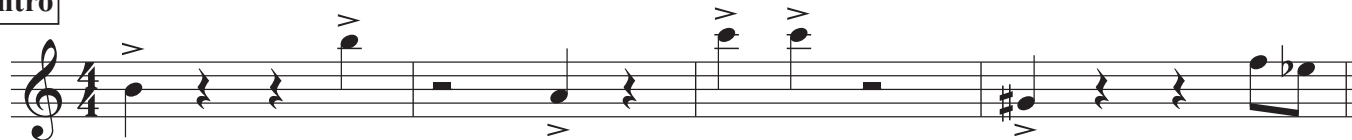
E♭ 2nd

The Soothsayer

Wayne Shorter


Up Swing ♩ = 220

Intro



Musical notation for the Intro, consisting of a single staff in 4/4 time. It features a melodic line with accents and rests, starting on a G4 and ending on a B4.

A B♭m7 B7(#11) B♭m7 B7(#11)



Musical notation for the first staff of section A, starting with a repeat sign. It features a melodic line with a slur over the first two measures and a dotted quarter note in the third measure.

B♭m7 B7(#11) B♭m7 B7(#11)

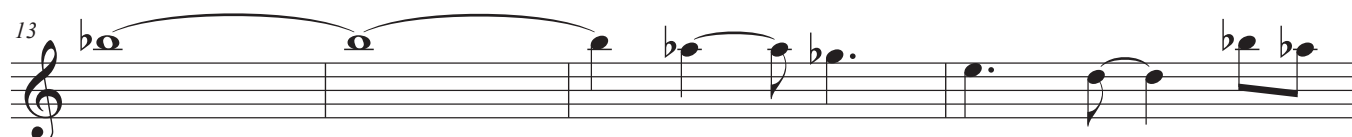
9



Musical notation for the second staff of section A, starting with a measure rest and a slur over the first two measures.

E♭m7 E7(#11) E♭m7 E7(#11)

13



Musical notation for the third staff of section A, starting with a measure rest and a slur over the first two measures.

E♭m7 E7(#11) F7b9(b13) Bm11 B♭m9

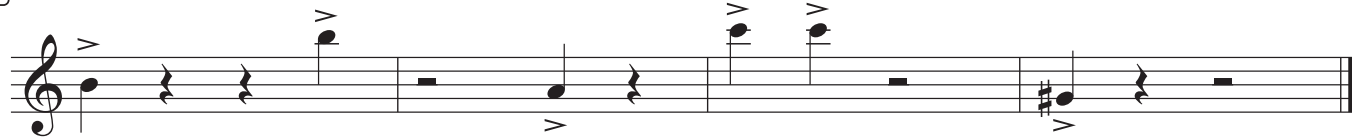
17



Musical notation for the fourth staff of section A, starting with a measure rest and a slur over the first two measures.

(only 1st)

B



Musical notation for section B, consisting of a single staff in 4/4 time. It features a melodic line with accents and rests, starting on a G4 and ending on a B4.

Fine

Solo on A
Head out AAB

as played on Wayne Shorter - The Soothsayer

Trb 3rd

The Soothsayer

Wayne Shorter

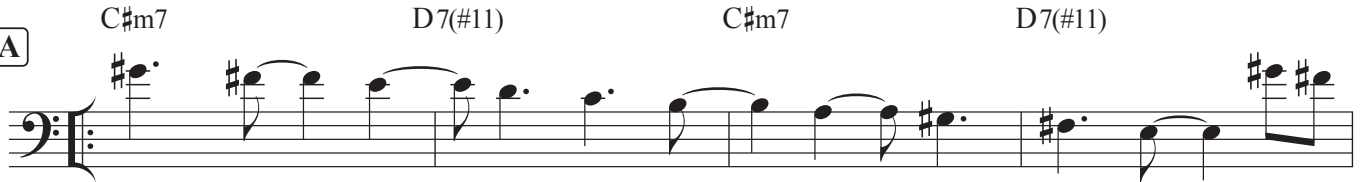
Up Swing ♩ = 220

Intro



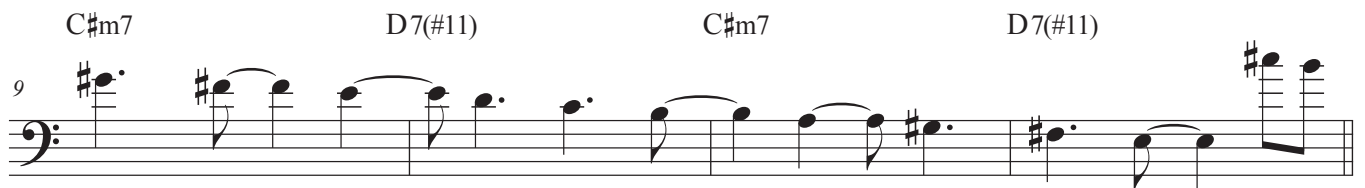
A

C#m7 D7(#11) C#m7 D7(#11)



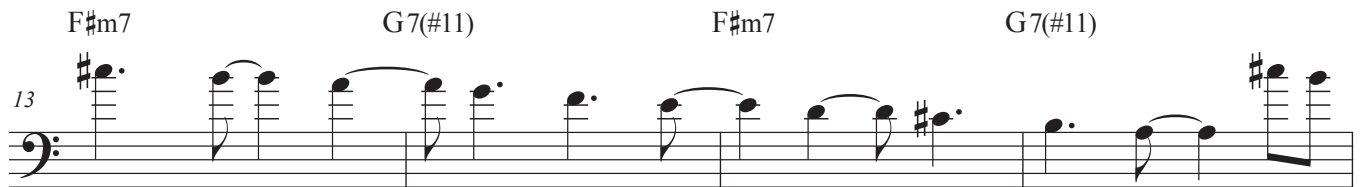
C#m7 D7(#11) C#m7 D7(#11)

9



F#m7 G7(#11) F#m7 G7(#11)

13



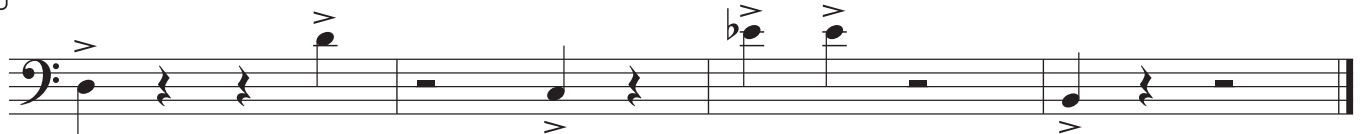
F#m7 G7(#11) G#7b9(b13) Dm11 C#m9

17



(only 1st)

B



Fine

Solo on A
Head Out AAB

as played on Wayne Shorter - The Soothsayer

Tenorsax 3rd

The Soothsayer

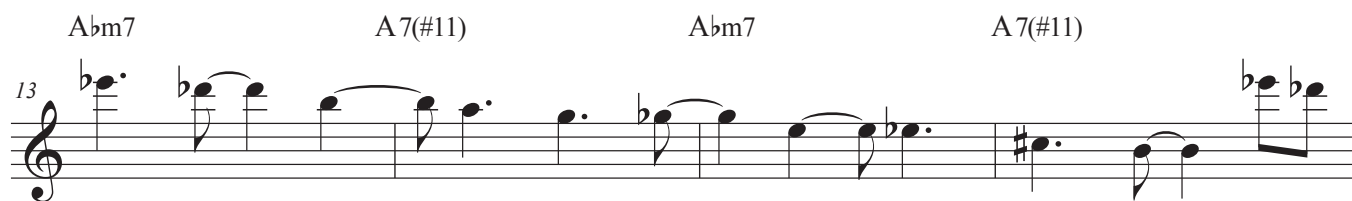
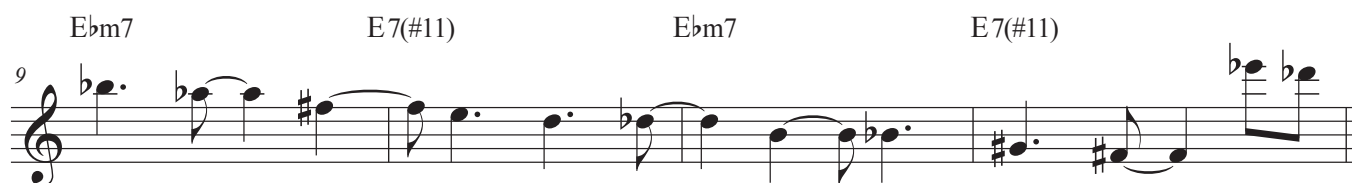
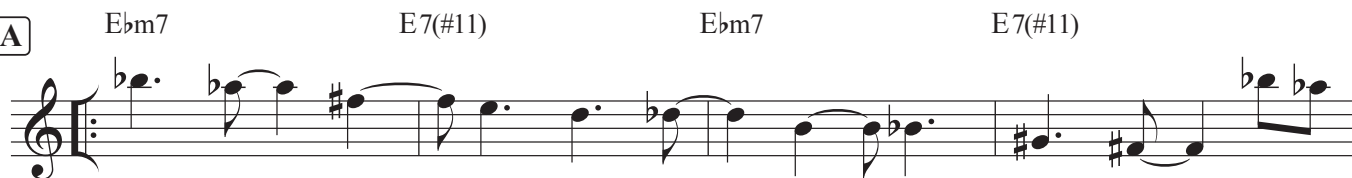
Wayne Shorter

Up Swing ♩ = 220

Intro



A



B



Fine

Solo on A
Head Out AAB

as played on Wayne Shorter - The Soothsayer

C

The Soothsayer

Up Swing ♩ = 220

Wayne Shorter

Intro

Intro musical notation for The Soothsayer, featuring three staves of music in 4/4 time. The notation includes various rhythmic patterns, accents, and rests.

A C#m7 D7(#11) C#m7 D7(#11)

Main body of musical notation for The Soothsayer, section A, featuring six staves of music. The notation includes chord changes (C#m7, D7(#11)) and melodic lines. A measure rest is indicated by the number 9 at the beginning of the fifth staff.

The Soothsayer

13

F#m7 G7(#11) F#m7 G7(#11)

F#m7 G7(#11) F#m7 G7(#11)

F#m7 G7(#11) F#m7 G7(#11)

F#m7 G7(#11) G#7b9(b13) Dm11 C#m9

F#m7 G7(#11) G#7b9(b13) Dm11 C#m9 (only 1st)

F#m7 G7(#11) G#7b9(b13) Dm11 C#m9

B

21

Solo on A
Head Out AAB

as played on Wayne Shorter - The Soothsayer