

C

# Tears for Neda

Rubato Ballad

Enrico Rava

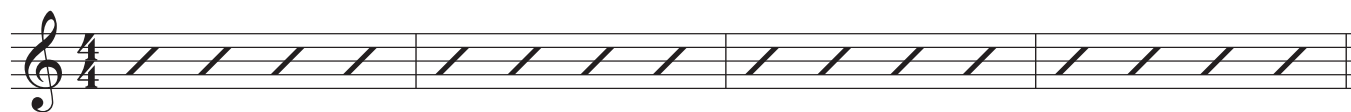
open Piano Intro Gm

on cue: Gm

F/A

Bb

Dsus



**A**

E♭Maj7(#11)

Em7(b5)

Gbm7

F Maj7



Gm7

Em7(b5)

E♭7(#11)

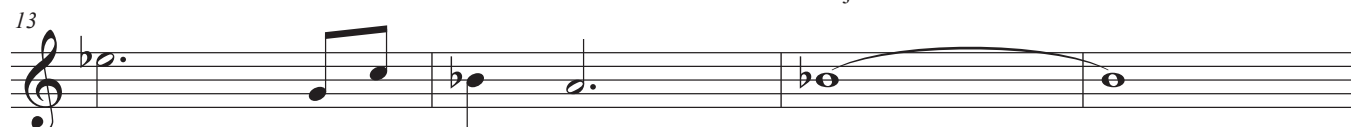
D7



Cm7

F7

G♭Maj7



E♭7(#11)

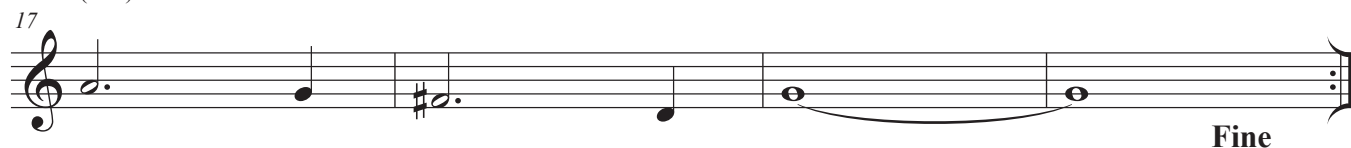
D7

Gm

F/A

Bb

Dsus



as played on Enrico Rava Quintet - Tribe (ECM 2218)

Bb

# Tears for Neda

Rubato Ballad

Enrico Rava

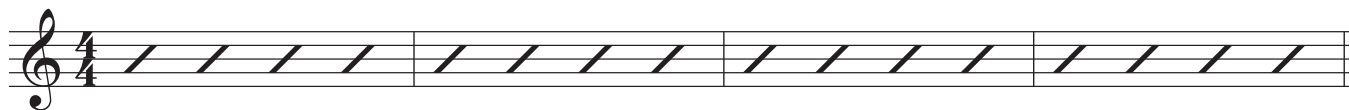
open Piano Intro Am

on cue: Am

G/B

C

Esus



**A**

FMaj7(#11)

F#m7(b5)

Abm7

GMaj7



Am7

F#m7(b5)

F7(#11)

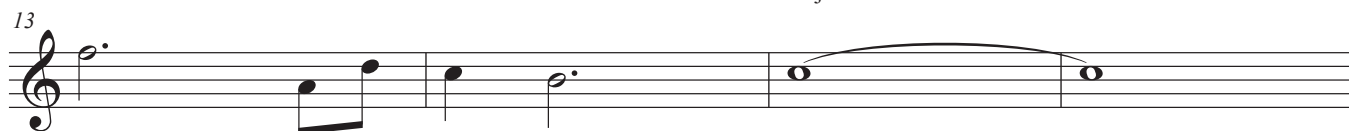
E7



Dm7

G7

AbMaj7



F7(#11)

E7

Am

G/B

C

Esus



as played on Enrico Rava Quintet - Tribe (ECM 2218)

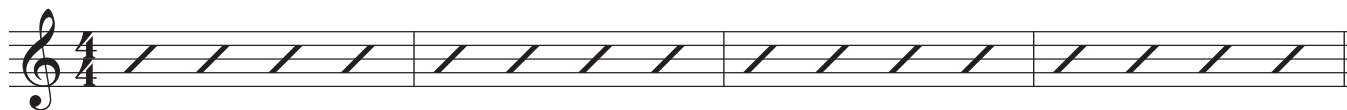
Eb

# Tears for Neda

Rubato Ballad

Enrico Rava

open Piano Intro Em on cue: Em D/F# G B<sub>sus</sub>



**A** CMaj7(#11) C#m7(b5) Ebm7 DMaj7

Em7 C#m7(b5) C7(#11) B7

Am7 D7 EbMaj7

C7(#11) B7 Em D/F# G B<sub>sus</sub>

**Fine**

Detailed description: This block contains the main melodic line of the piece. It is written in treble clef with a key signature of one flat (Bb) and a 4/4 time signature. The piece is divided into measures 1 through 17. Measure 1 is the start of the 'A' section. Measures 2-5 contain the first line of music. Measures 6-8 contain the second line. Measures 9-11 contain the third line. Measures 12-14 contain the fourth line. Measures 15-17 contain the fifth line, which ends with a double bar line and the word 'Fine'. Chord symbols are placed above the notes to indicate the harmonic structure. A slur is used over measures 12-14 and 15-17.

as played on Enrico Rava Quintet - Tribe (ECM 2218)