

Bb

# Dream Steps

Latin ♩ = 196

Jim Hall

**A** (flgh & git)

5

9

13

**B** (flgh & git)

21

25

29

33

G Maj7(#11)  
(only for End)

Solos on "You stepped out of a Dream" in G

as played on Jim Hall / Tom Harrell - Dialogues

Git

# Dream Steps

Latin ♩ = 196

Jim Hall

**A** (flgh & git)

Musical notation for section A, measures 1-12. The notation is in 4/4 time with a key signature of one flat (Bb). It features a melodic line with various rhythmic patterns, including eighth and sixteenth notes, and rests. Measure numbers 1, 5, 9, and 13 are indicated. An accent (^) is placed over the eighth note in measure 12. The notation ends with a double bar line.

**B**

(flgh & git)

Musical notation for section B, measures 13-32. The notation is in 4/4 time with a key signature of one flat (Bb). It features a melodic line with various rhythmic patterns, including eighth and sixteenth notes, and rests. Measure numbers 13, 21, 25, and 29 are indicated. Accents (^) are placed over the eighth notes in measures 13, 21, 25, and 29. The notation ends with a double bar line.

F Maj7(#11)

Musical notation for the final measure, measure 33. The notation is in 4/4 time with a key signature of one flat (Bb). It features a melodic line with various rhythmic patterns, including eighth and sixteenth notes, and rests. Measure number 33 is indicated. An accent (^) is placed over the eighth note. The notation ends with a double bar line.

(only for End)

Solos on "You stepped out of a Dream" in F

as played on Jim Hall / Tom Harrell - Dialogues

C

# Dream Steps

Latin ♩ = 196

Jim Hall

**A** (flgh & git)

5

9

13 (git)

**B**

(flgh & git)

21

25

29

33

FMaj7(#11)

(only for End)

Solos on "You stepped out of a Dream" in F

as played on Jim Hall / Tom Harrell - Dialogues

Eb

# Dream Steps

Latin ♩ = 196

Jim Hall

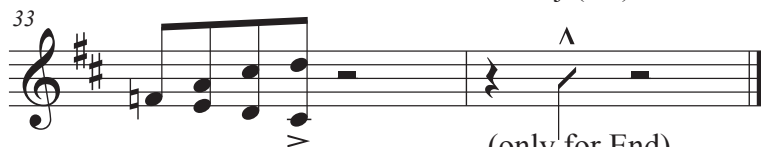
**A** (flgh & git)



**B** (flgh & git)



DMaj7(#11)



Solos on "You stepped out of a Dream" in D

(only for End)

as played on Jim Hall / Tom Harrell - Dialogues