

Bb

Spring Sprung In

Swing ♩ = 112

Bruce Dickinson

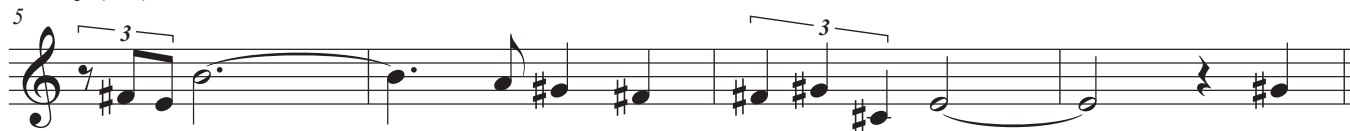
A GMaj7(#11)

F#m11



GMaj7(#11)

F#m11



C#m9

AMaj7(#11)



G#m11

D#m11



B AbMaj7(#11)

Gm11



AbMaj7(#11)

Gm11



Dm11

BbMaj7(#11)



Am11

EbMaj7(#11)



as played on Bruce Dickinson / Kenny Wheeler - Still Waters

C

Spring Sprung In

Swing $\text{♩} = 112$

Bruce Dickinson

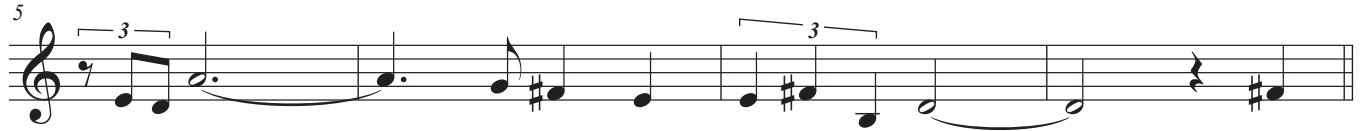
A FMaj7(#11)

Em11



FMaj7(#11)

Em11



Bm9

GMaj7(#11)



F#m11

C#m11



B GbMaj7(#11)

Fm11



GbMaj7(#11)

Fm11



Cm11

AbMaj7(#11)



Gm11

DbMaj7(#11)



as played on Bruce Dickinson / Kenny Wheeler - Still Waters

Eb

Spring Sprung In

Swing $\text{♩} = 112$

Bruce Dickinson

A DMaj7(#11) C#m11

DMaj7(#11) C#m11

5

G#m9 EMaj7(#11)

9

D#m11 A#m11

13

B EbMaj7(#11) Dm11

EbMaj7(#11) Dm11

21

A m11 FMaj7(#11)

25

Em11 BbMaj7(#11)

29

as played on Bruce Dickinson / Kenny Wheeler - Still Waters