

C

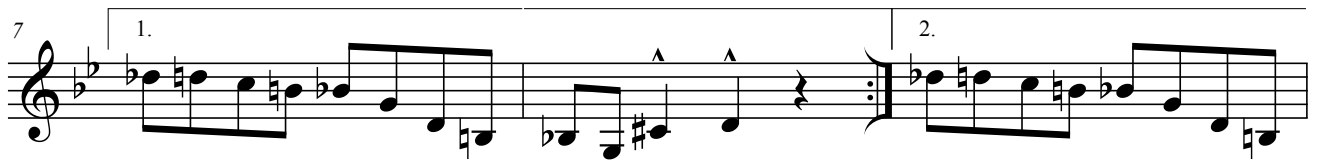
Rich Kids München

Matthias Bergmann

Second Line ♩ = 120

A

Gm

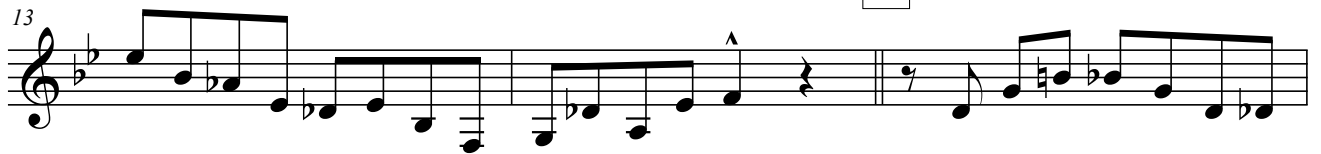


B Ebsus



E \flat E F

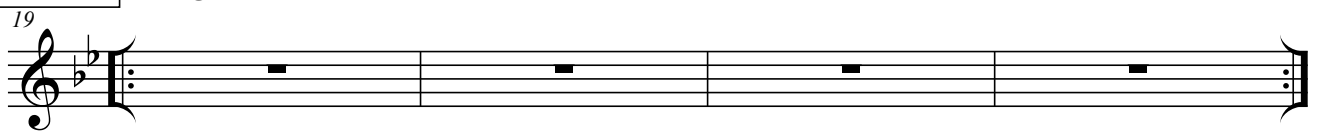
C Gm



Fine

Interlude

Gm



E♭

Rich Kids München

Matthias Bergmann

Second Line ♩ = 120

A Em

4

7

10

13

16

B Csus

C C# D

C Em

Fine

Interlude Em

19